

Product datasheet for PH321680

CLEC2D (NM_001004419) Human Mass Spec Standard

Product data:

Product Type:	Mass Spec Standards
Description:	CLEC2D MS Standard C13 and N15-labeled recombinant protein (NP_001004419)
Species:	Human
Expression Host:	HEK293
Expression cDNA Clone or AA Sequence:	RC221680
Predicted MW:	22.1 kDa
Protein Sequence:	>RC221680 representing NM_001004419 Red=Cloning site Green=Tags(s) MHDSNNVEKDITPSELPANPGCLHSKEHSIKATLIWRLFFLIMFLTIIIVCGMVAALSAIRANCHQEPSVC LQAACPESWIGFQRKCFYFSDDTKNWTSSQRFCDSDADLAQVESFQELNFLRLRYKGPSDHWIGLSREQG QPWKWINGTEWTRQLVMKEDGANLYVAKVSQVPRMNPVMSYPGSRRVCLFE TRTRPLEQKLI SEEDLAANDILDYKDDDDKV
Tag:	C-Myc/DDK
Purity:	> 80% as determined by SDS-PAGE and Coomassie blue staining
Concentration:	>0.05 µg/µL as determined by microplate BCA method
Labeling Method:	Labeled with [U- 13C6, 15N4]-L-Arginine and [U- 13C6, 15N2]-L-Lysine
Buffer:	25 mM Tris-HCl, 100 mM glycine, pH 7.3
Storage:	Store at -80°C. Avoid repeated freeze-thaw cycles.
Stability:	Stable for 3 months from receipt of products under proper storage and handling conditions.
RefSeq:	<u>NP_001004419</u>
RefSeq Size:	1821
RefSeq ORF:	582
Synonyms:	CLAX; LLT1; OCIL
Locus ID:	29121
UniProt ID:	<u>Q9UHP7</u>



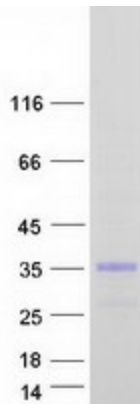
[View online »](#)

Cytogenetics: 12p13.31

Summary: This gene encodes a member of the natural killer cell receptor C-type lectin family. The encoded protein inhibits osteoclast formation and contains a transmembrane domain near the N-terminus as well as the C-type lectin-like extracellular domain. Several alternatively spliced transcript variants have been identified for this gene. [provided by RefSeq, Oct 2010]

Protein Families: Druggable Genome, Transmembrane

Product images:



Coomassie blue staining of purified CLEC2D protein (Cat# [TP321680]). The protein was produced from HEK293T cells transfected with CLEC2D cDNA clone (Cat# [RC221680]) using MegaTran 2.0 (Cat# [TT210002]).