

Product datasheet for PH321611

CD133 (PROM1) (NM_006017) Human Mass Spec Standard

Product data:

Product Type:	Mass Spec Standards
Description:	PROM1 MS Standard C13 and N15-labeled recombinant protein (NP_006008)
Species:	Human
Expression Host:	HEK293
Expression cDNA Clone or AA Sequence:	RC221611
Predicted MW:	97 kDa
Protein Sequence:	>RC221611 representing NM_006017 Red =Cloning site Green =Tags(s)

MALVLGSLLLGLCGNSFSGGQPSSTDAPKAWNYELPATNYETQDSHKAGPIGILFELVHIFLYVYVQPRD
 FPEDTLRKFLQKAYESKIDYDKPETVILGLKIVYYEAGIILCCVLGLFIILMPLVGYYFFCMCRCCNCKG
 GEMHQKQKENGPFRLKCFALISLLVICIIISIGIFYGFVANHQVRTRIKRSRKLADSNFKDLRTLLNETPE
 QIKYILAQYNTTKDKAFTDLNSINSVLGGGILDRLRPNIIPVLDEIKSMATAIKETKEALENMNSTLKSL
 HQQSTQLSSSLTSVKTSRSSLNDPLCLVHPSSSETCNSIRLSLSQLNSNPQLPVPDAELDNVNNVLR
 TDLDGLVQQGYQSLNDIPDRVQRQTTTIVAGIKRVLNSIGSDIDNVTQRLPIQDILSAFSVYVNNTESYI
 HRNLPTLEEYDSYWWLGGVLICSLTLIVIFYLGLLCGVCGYDRHATPTTRGCVSNTGGVFLMVGVLGSL
 FLFCWILMIIVLTFVFGANVEKLICEPYTSKELFRVLDTPYLLNEDWEYYSGLFKNKSKMKLTFEQVY
 SDCKKNRGTYGTLHLQNSFNISEHLNINEHTGSSSELESLKVNLNIFLLGAAGRKNLQDFAACGIDRMN
 YDSYLAQTGKSPAGVNLISFAYDLEAKANSLPPGNLRNSLKRDAQTIKTIHQQRVLPIDQSLSTLYQSVK
 ILQRTGNGLLERVTRILASLDFAQNFINNTSSVIEETKKYGRITIGYFEHYLQWIEFSISEKVASCKP
 VATALDTAVDVLCSYIIDPLNLFWFGIGKATVFLPALIFAVKLAKYYRRMDSYDDVETIPMKNME
 NGNGYHKDHVYGIHNPVMTSPSQH

TRTRPLEQKLISEEDLAANDILDYKDDDDKV

Tag:	C-Myc/DDK
Purity:	> 80% as determined by SDS-PAGE and Coomassie blue staining
Concentration:	>0.05 µg/µL as determined by microplate BCA method
Labeling Method:	Labeled with [U- ¹³ C ₆ , ¹⁵ N ₄]-L-Arginine and [U- ¹³ C ₆ , ¹⁵ N ₂]-L-Lysine
Buffer:	25 mM Tris-HCl, 100 mM glycine, pH 7.3
Storage:	Store at -80°C. Avoid repeated freeze-thaw cycles.
Stability:	Stable for 3 months from receipt of products under proper storage and handling conditions.


[View online »](#)

RefSeq: [NP_006008](#)

RefSeq Size: 3794

RefSeq ORF: 2595

Synonyms: AC133; CD133; CORD12; MCDR2; MSTP061; PROML1; RP41; STGD4

Locus ID: 8842

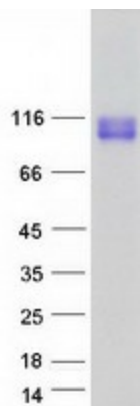
UniProt ID: [O43490](#)

Cytogenetics: 4p15.32

Summary: This gene encodes a pentaspan transmembrane glycoprotein. The protein localizes to membrane protrusions and is often expressed on adult stem cells, where it is thought to function in maintaining stem cell properties by suppressing differentiation. Mutations in this gene have been shown to result in retinitis pigmentosa and Stargardt disease. Expression of this gene is also associated with several types of cancer. This gene is expressed from at least five alternative promoters that are expressed in a tissue-dependent manner. Multiple transcript variants encoding different isoforms have been found for this gene. [provided by RefSeq, Mar 2009]

Protein Families: Druggable Genome, ES Cell Differentiation/IPS, Transmembrane

Product images:



Coomassie blue staining of purified PROM1 protein (Cat# [TP321611]). The protein was produced from HEK293T cells transfected with PROM1 cDNA clone (Cat# [RC221611]) using MegaTran 2.0 (Cat# [TT210002]).