

## Product datasheet for PH321606

### CD61 (ITGB3) (NM\_000212) Human Mass Spec Standard

#### Product data:

Product Type:	Mass Spec Standards
Description:	ITGB3 MS Standard C13 and N15-labeled recombinant protein (NP_000203)
Species:	Human
Expression Host:	HEK293
Expression cDNA Clone or AA Sequence:	RC221606
Predicted MW:	87.1 kDa
Protein Sequence:	>Peptide sequence encoded by RC221606 Blue=ORF Red=Cloning site Green=Tag(s)

MRARPRRPLWATVLALGALAGVGGPNICTTRGVSSCQQLAVSPMCWCWCSDEALPLGSPRCDLKEN  
LLKDNCAPESEIFPVSEARVLEDRPLSDKSGDSSQVTQVSPQRIALRLRPDDSKNFISIQRQVEDYYPV  
DIYYLMDLSYSMKDDLWSIQNLGTLATQMRKLTSNLRIGFGAFVDKPVSPYMYISPPEALENPCYDMK  
TTCLPMFGYKHVLTLDQVTRFNEEVKKQSVSRNRDAPEGGFDAIMQATVCDEKIGWRNDASHLLVFTT  
DAKTHIALDGRLAGIVQPNQGQCHVGSNDNHSASTTMDYPSLGLMTEKLSQKNINLIFAVTENVNLYQ  
NYSELIPGTTVGVL SMDSSNVLQLIVDAYGKIRSKVELEVRDLPEELSLSFNATCLNNEVIPGLKSCMG  
LKI GDTVSFSIEAKVRGCPQEKEKSFTIKPVGFKDSLIVQVTFDCDCACQAQAEPNSHRCNNGNGTFEC  
GVCRCGPWLGSGQCESEEDYRPSQQDECSPREGQPVCSQRGECLCGQCVCHSSDFGKITGKYCECDDF  
SCVRYKGE MCGSGHGQCSCGDCLCDSDWTGYNCNCTTRTDTCMSSNGLLCSGRGKCEGSCVCIQPGSYG  
DTCEKPTCPDACTFKKECVECKKFDRGALHDENTCNRYCRDEIESVKELKDTGKDAVNCTYKNEDDCV  
VRFQYYEDSSGKSILYVVEEPECPKGPDILVLLSVMGAILLIGLAALLIWKLLITIHDRKEFAKFEFE  
RARAKWDTANNPLYKEATSTFTNITYRGT  
SGPTRTRPLEQKLI SEEDLAANDILDYKDDDDKV

Recombinant protein using RC221606 also available, [TP321606](#)

Tag:	C-Myc/DDK
Purity:	> 80% as determined by SDS-PAGE and Coomassie blue staining
Concentration:	>0.05 µg/µL as determined by microplate BCA method
Labeling Method:	Labeled with [U- <sup>13</sup> C <sub>6</sub> , <sup>15</sup> N <sub>4</sub> ]-L-Arginine and [U- <sup>13</sup> C <sub>6</sub> , <sup>15</sup> N <sub>2</sub> ]-L-Lysine
Buffer:	25 mM Tris-HCl, 100 mM glycine, pH 7.3
Storage:	Store at -80°C. Avoid repeated freeze-thaw cycles.
Stability:	Stable for 3 months from receipt of products under proper storage and handling conditions.



[View online »](#)

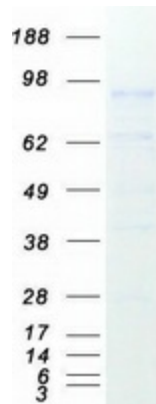
RefSeq:	<a href="#">NP_000203</a>
RefSeq Size:	4894
RefSeq ORF:	2364
Synonyms:	BDPLT2; BDPLT16; BDPLT24; CD61; GP3A; GPIIIa; GT; GT2
Locus ID:	3690
UniProt ID:	<a href="#">P05106</a>
Cytogenetics:	17q21.32

**Summary:** The ITGB3 protein product is the integrin beta chain beta 3. Integrins are integral cell-surface proteins composed of an alpha chain and a beta chain. A given chain may combine with multiple partners resulting in different integrins. Integrin beta 3 is found along with the alpha IIb chain in platelets. Integrins are known to participate in cell adhesion as well as cell-surface mediated signalling. [provided by RefSeq, Jul 2008]

**Protein Families:** Druggable Genome, ES Cell Differentiation/IPS, Transmembrane

**Protein Pathways:** Arrhythmogenic right ventricular cardiomyopathy (ARVC), Dilated cardiomyopathy, ECM-receptor interaction, Focal adhesion, Hematopoietic cell lineage, Hypertrophic cardiomyopathy (HCM), Regulation of actin cytoskeleton

### Product images:



Coomassie blue staining of purified ITGB3 protein (Cat# [TP321606]). The protein was produced from HEK293T cells transfected with ITGB3 cDNA clone (Cat# [RC221606]) using MegaTran 2.0 (Cat# [TT210002]).