

## Product datasheet for PH321605

### NCBP2 (NM\_001042540) Human Mass Spec Standard

#### Product data:

Product Type:	Mass Spec Standards
Description:	NCBP2 MS Standard C13 and N15-labeled recombinant protein (NP_001036005)
Species:	Human
Expression Host:	HEK293
Expression cDNA Clone or AA Sequence:	RC221605
Predicted MW:	11.8 kDa
Protein Sequence:	>RC221605 representing NM_001042540 <b>Red</b> =Cloning site <b>Green</b> =Tags(s)  MSGGLLKALRSDSYVELSQYRDQHFRGDNEEQEKLLKSYAENAMRYINGTRLDDRIIRTDWDAGFKEGR QYGRGRSGGQVRDEYRQDYDAGRGGYGKLAQNQ  <b>SGP</b> TRTRRLE <b>QKL</b> I <b>SEEDLAANDILDYKDDDDK</b> V
Tag:	C-Myc/DDK
Purity:	> 80% as determined by SDS-PAGE and Coomassie blue staining
Concentration:	>0.05 µg/µL as determined by microplate BCA method
Labeling Method:	Labeled with [U- 13C6, 15N4]-L-Arginine and [U- 13C6, 15N2]-L-Lysine
Buffer:	25 mM Tris-HCl, 100 mM glycine, pH 7.3
Storage:	Store at -80°C. Avoid repeated freeze-thaw cycles.
Stability:	Stable for 3 months from receipt of products under proper storage and handling conditions.
RefSeq:	<a href="#">NP_001036005</a>
RefSeq Size:	2016
RefSeq ORF:	309
Synonyms:	CBC2; CBP20; NIP1; PIG55
Locus ID:	22916
UniProt ID:	<a href="#">P52298</a>
Cytogenetics:	3q29



[View online »](#)

**Summary:**

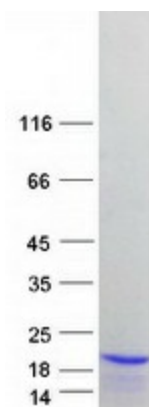
The product of this gene is a component of the nuclear cap-binding protein complex (CBC), which binds to the monomethylated 5' cap of nascent pre-mRNA in the nucleoplasm. The encoded protein has an RNP domain commonly found in RNA binding proteins, and contains the cap-binding activity. The CBC promotes pre-mRNA splicing, 3'-end processing, RNA nuclear export, and nonsense-mediated mRNA decay. Multiple transcript variants encoding different isoforms have been found for this gene. [provided by RefSeq, Jul 2008]

**Protein Families:**

Druggable Genome

**Protein Pathways:**

Spliceosome

**Product images:**

Coomassie blue staining of purified NCBP2 protein (Cat# [TP321605]). The protein was produced from HEK293T cells transfected with NCBP2 cDNA clone (Cat# [RC221605]) using MegaTran 2.0 (Cat# [TT210002]).