

Product datasheet for PH321598

TGIF2LY (NM_139214) Human Mass Spec Standard

Product data:

Product Type:	Mass Spec Standards
Description:	TGIF2LY MS Standard C13 and N15-labeled recombinant protein (NP_631960)
Species:	Human
Expression Host:	HEK293
Expression cDNA Clone or AA Sequence:	RC221598
Predicted MW:	20.6 kDa
Protein Sequence:	>RC221598 representing NM_139214 Red =Cloning site Green =Tags(s) MEAAADGPAETQSPVEKDSPAQTQSPAQDTSIMSRNADTGRVLALPEHKKKRKGNLPAESVKILRDWMY KHRFKAYPSEEEKQMLSEKTNLSLLRISNWFINARRRILPDMLQQRNDPIIGHKTGKDAHATHLQSTEA SVPKSGPVVQTMKACPCGPCQRARCQERSNQIRSRPLARSSPE TR TRPLEQKLISEEDLAANDILDYKDDDDKV
Tag:	C-Myc/DDK
Purity:	> 80% as determined by SDS-PAGE and Coomassie blue staining
Concentration:	>0.05 µg/µL as determined by microplate BCA method
Labeling Method:	Labeled with [U- 13C6, 15N4]-L-Arginine and [U- 13C6, 15N2]-L-Lysine
Buffer:	25 mM Tris-HCl, 100 mM glycine, pH 7.3
Storage:	Store at -80°C. Avoid repeated freeze-thaw cycles.
Stability:	Stable for 3 months from receipt of products under proper storage and handling conditions.
RefSeq:	NP_631960
RefSeq Size:	880
RefSeq ORF:	555
Synonyms:	TGIFLY
Locus ID:	90655
UniProt ID:	Q8IUJ0



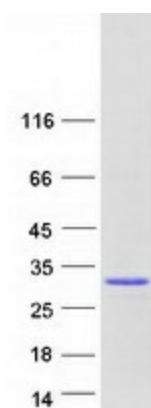
[View online »](#)

Cytogenetics: Yp11.2

Summary: This gene encodes a member of the TALE/TGIF homeobox family of transcription factors. This gene lies within the male specific region of chromosome Y, in a block of sequence that is thought to be the result of a large X-to-Y transposition. The C-terminus of this protein is divergent from that of its chromosome X homolog (TGIF2LX), suggesting that this protein may act as a regulator of TGIF2LX. [provided by RefSeq, Jul 2008]

Protein Families: Transcription Factors

Product images:



Coomassie blue staining of purified TGIF2LY protein (Cat# [TP321598]). The protein was produced from HEK293T cells transfected with TGIF2LY cDNA clone (Cat# [RC221598]) using MegaTran 2.0 (Cat# [TT210002]).