

Product datasheet for PH321597

Fibulin 1 (FBLN1) (NM_006486) Human Mass Spec Standard

Product data:

Product Type:	Mass Spec Standards
Description:	FBLN1 MS Standard C13 and N15-labeled recombinant protein (NP_006477)
Species:	Human
Expression Host:	HEK293
Expression cDNA Clone or AA Sequence:	RC221597
Predicted MW:	77.24 kDa
Protein Sequence:	>RC221597 representing NM_006486 Red=Cloning site Green=Tags(s)

MERAAPSRRVPLPLLLLGLALLAAGVDADVLLLEACCADGHRMATHQKDCSLPYATESKECRMVQEQCCH
SQLEELHCATGISLANEQDRCATPHGDNASLEATFVKRCCHCCLLGRAAQAGQSQCEYSLMVGYYCQGQVF
RACCVKSQETGDLVDVGLQETDKIIIEVEEEQEDPYLNDRCRGGGPKQCCRDTGDEVVCSFVGYQLLSD
GVSCEDVNECITGSHSCLGESCINTVGSFRCQRDSSCGTGYELTEDNSCKDIDECESGIHNCLPDFICQ
NTLGSFRCRPKLQCKSGFIQDALGNCIDINECLISAPCPIGHTCINTEGSYTCQKNVPNCGRGYHLNEE
GTRCVDVDECAPPAEPCGKGRVCVNSPGSFRCECKTGYFDGISRMCVDVNECQRYPGRLCGHKCENTLG
SYLCSCSVGFRLSVDGRSCEDINECSSSPCSQECANVYGSYQCYCRRGYQLSDVDGVTCEDIDECALPTG
GHICSYRCINIPGSFQCSCPSSGYRLAPNGRNCQDIDECVTGIHNCSINETCFNIQGGFRCLAFECPENY
RRSAATLQEKTDTVRCIKSCRPNVDVTCVDFPVHTISHTVISLPTFREFTRPEEIIIFLRAITPPHPASQA
NIIFDITEGNLRDSFDIIKRYMDGMTVGVVRQVRPIVGPFAVLKLEMNYYVGGVYSHRNVVNVHIFVSE
YWF

TRTRPLEQKLISEEDLAANDILDYKDDDDKV

Tag:	C-Myc/DDK
Purity:	> 80% as determined by SDS-PAGE and Coomassie blue staining
Concentration:	>0.05 µg/µL as determined by microplate BCA method
Labeling Method:	Labeled with [U- ¹³ C ₆ , ¹⁵ N ₄]-L-Arginine and [U- ¹³ C ₆ , ¹⁵ N ₂]-L-Lysine
Buffer:	25 mM Tris-HCl, 100 mM glycine, pH 7.3
Storage:	Store at -80°C. Avoid repeated freeze-thaw cycles.
Stability:	Stable for 3 months from receipt of products under proper storage and handling conditions.
RefSeq:	NP_006477



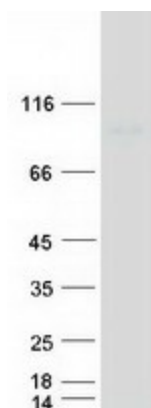
[View online »](#)

RefSeq Size:	2947
RefSeq ORF:	2109
Synonyms:	FBLN; FIBL1
Locus ID:	2192
UniProt ID:	P23142 , Q8NBH6
Cytogenetics:	22q13.31

Summary: Fibulin 1 is a secreted glycoprotein that becomes incorporated into a fibrillar extracellular matrix. Calcium-binding is apparently required to mediate its binding to laminin and nidogen. It mediates platelet adhesion via binding fibrinogen. Four splice variants which differ in the 3' end have been identified. Each variant encodes a different isoform, but no functional distinctions have been identified among the four variants. [provided by RefSeq, Jul 2008]

Protein Families: Secreted Protein

Product images:



Coomassie blue staining of purified FBLN1 protein (Cat# [TP321597]). The protein was produced from HEK293T cells transfected with FBLN1 cDNA clone (Cat# [RC221597]) using MegaTran 2.0 (Cat# [TT210002]).