

Product datasheet for PH321529

LUC7L (NM_201412) Human Mass Spec Standard

Product data:

Product Type:	Mass Spec Standards
Description:	LUC7L MS Standard C13 and N15-labeled recombinant protein (NP_958815)
Species:	Human
Expression Host:	HEK293
Expression cDNA Clone or AA Sequence:	RC221529
Predicted MW:	43.5 kDa
Protein Sequence:	>RC221529 representing NM_201412 Red=Cloning site Green=Tags(s)
	MSAQAQMRALLDQLMGTARDGDETRQVRKFTDDRVCCKSHLLDCCPHDILAGTRMDLGECTKIHDLALRAD YEIASKERDLFFELDAMDHLESFIAECDRRELAKKRLAETQEEISAEVSAKAKEVHELNEEIGKLLAKA EQLGAEGNVDESQKILMEVEKVRAKKKEAEEYRNSMPASSFQQQLRVCEVCSAYLGLHDNDRRLADHF GGKLHLGFIQIREKLDQLRKTVAEKQEKRNQDLRRREEREREERL SRRSGSRTDRRRRSRDRRRRRS RSTSRERRKLSRSRSDRHRHRHSRSHSRGHRASRDRAKYKFSRERASREESWESGRSERGPPDWR LESSNGKMASRRSEEKEAGEI
	TRTRPLEQKLI SEEDLAANDILDYKDDDDKV
Tag:	C-Myc/DDK
Purity:	> 80% as determined by SDS-PAGE and Coomassie blue staining
Concentration:	>0.05 µg/µL as determined by microplate BCA method
Labeling Method:	Labeled with [U- ¹³ C ₆ , ¹⁵ N ₄]-L-Arginine and [U- ¹³ C ₆ , ¹⁵ N ₂]-L-Lysine
Buffer:	25 mM Tris-HCl, 100 mM glycine, pH 7.3
Storage:	Store at -80°C. Avoid repeated freeze-thaw cycles.
Stability:	Stable for 3 months from receipt of products under proper storage and handling conditions.
RefSeq:	<u>NP_958815</u>
RefSeq Size:	1452
RefSeq ORF:	1113
Synonyms:	hLuc7B1; Luc7; LUC7B1; SR+89
Locus ID:	55692



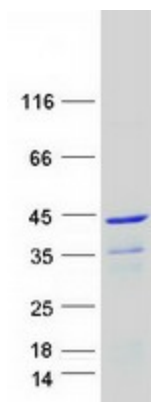
[View online »](#)

UniProt ID: [Q9NQ29](#)

Cytogenetics: 16p13.3

Summary: The LUC7L gene may represent a mammalian heterochromatic gene, encoding a putative RNA-binding protein similar to the yeast Luc7p subunit of the U1 snRNP splicing complex that is normally required for 5-prime splice site selection (Tufarelli et al., 2001 [PubMed 11170747]).[supplied by OMIM, Mar 2008]

Product images:



Coomassie blue staining of purified LUC7L protein (Cat# [TP321529]). The protein was produced from HEK293T cells transfected with LUC7L cDNA clone (Cat# [RC221529]) using MegaTran 2.0 (Cat# [TT210002]).