

## Product datasheet for PH321523

### KRTAP3-3 (NM\_033185) Human Mass Spec Standard

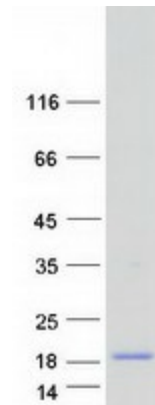
#### Product data:

Product Type:	Mass Spec Standards
Description:	KRTAP3 MS Standard C13 and N15-labeled recombinant protein (NP_149441)
Species:	Human
Expression Host:	HEK293
Expression cDNA Clone or AA Sequence:	RC221523
Predicted MW:	10.4 kDa
Protein Sequence:	<p>&gt;RC221523 protein sequence</p> <p>Red=Cloning site Green=Tags(s)</p> <p>MDCCASRGCSVPTGPATTICSSDKSCRCGVCLPSTCPHTVWLLEPTCCDNCPPCHIPQPCVPTCFLNLS CQPTPGLETNLTTFTQPCYEPCLPRGC</p> <p>TRTRPLEQKLISEEDLAANDILDYKDDDDKV</p>
Tag:	C-Myc/DDK
Purity:	> 80% as determined by SDS-PAGE and Coomassie blue staining
Concentration:	>0.05 µg/µL as determined by microplate BCA method
Labeling Method:	Labeled with [U- 13C6, 15N4]-L-Arginine and [U- 13C6, 15N2]-L-Lysine
Buffer:	25 mM Tris-HCl, 100 mM glycine, pH 7.3
Storage:	Store at -80°C. Avoid repeated freeze-thaw cycles.
Stability:	Stable for 3 months from receipt of products under proper storage and handling conditions.
RefSeq:	<u><a href="#">NP_149441</a></u>
RefSeq Size:	754
RefSeq ORF:	294
Synonyms:	KAP3.3; KRTAP3.3
Locus ID:	85293
UniProt ID:	<u><a href="#">Q9BYR6</a></u>
Cytogenetics:	17q21.2


[View online »](#)

**Summary:**

This protein is a member of the keratin-associated protein (KAP) family. The KAP proteins form a matrix of keratin intermediate filaments which contribute to the structure of hair fibers. KAP family members appear to have unique, family-specific amino- and carboxyl-terminal regions and are subdivided into three multi-gene families according to amino acid composition: the high sulfur, the ultrahigh sulfur, and the high tyrosine/glycine KAPs. This protein is a member of the high sulfur KAP family and the gene is localized to a cluster of KAPs at 17q12-q21. [provided by RefSeq, Jul 2008]

**Product images:**


Coomassie blue staining of purified KRTAP3-3 protein (Cat# [TP321523]). The protein was produced from HEK293T cells transfected with KRTAP3-3 cDNA clone (Cat# [RC221523]) using MegaTran 2.0 (Cat# [TT210002]).