

Product datasheet for PH321486

MAFG (NM_002359) Human Mass Spec Standard

Product data:

Product Type:	Mass Spec Standards
Description:	MAFG MS Standard C13 and N15-labeled recombinant protein (NP_002350)
Species:	Human
Expression Host:	HEK293
Expression cDNA Clone or AA Sequence:	RC221486
Predicted MW:	17.7 kDa
Protein Sequence:	<p>>RC221486 representing NM_002359</p> <p>Red=Cloning site Green=Tags(s)</p> <p>MTTPNKGNKALKVKREPGENGSLTDEELVTMSVRELNQHLRGLSKKEIVQLKQRRRTLKNRGYAASCRV KRVTKKEELEKQKAELQQEVEKLASENASMKLELDALRSKYEALQTFARTVARSPVAPARGPLAAGLGPL VPGKVAATSVITIVKSKTDARS</p> <p>TRTRPLEQKLISEEDLAANDILDYKDDDDKV</p>
Tag:	C-Myc/DDK
Purity:	> 80% as determined by SDS-PAGE and Coomassie blue staining
Concentration:	>0.05 µg/µL as determined by microplate BCA method
Labeling Method:	Labeled with [U- ¹³ C ₆ , ¹⁵ N ₄]-L-Arginine and [U- ¹³ C ₆ , ¹⁵ N ₂]-L-Lysine
Buffer:	25 mM Tris-HCl, 100 mM glycine, pH 7.3
Storage:	Store at -80°C. Avoid repeated freeze-thaw cycles.
Stability:	Stable for 3 months from receipt of products under proper storage and handling conditions.
RefSeq:	<u>NP_002350</u>
RefSeq Size:	5043
RefSeq ORF:	486
Synonyms:	hMAF
Locus ID:	4097
UniProt ID:	<u>O15525</u> , <u>A0A024R8X1</u>



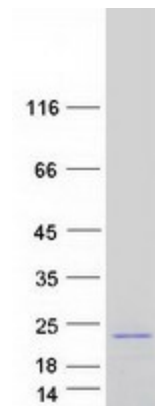
[View online »](#)

Cytogenetics: 17q25.3

Summary: Globin gene expression is regulated through nuclear factor erythroid-2 (NFE2) elements located in enhancer-like locus control regions positioned many kb upstream of alpha- and beta-gene clusters (summarized by Blank et al., 1997 [PubMed 9166829]). NFE2 DNA-binding activity consists of a heterodimer containing a ubiquitous small Maf protein (MafF, MIM 604877; MafG; or MafK, MIM 600197) and the tissue-restricted protein p45 NFE2 (MIM 601490). Both subunits are members of the activator protein-1-like superfamily of basic leucine zipper (bZIP) proteins (see MIM 165160).[supplied by OMIM, Mar 2010]

Protein Families: Druggable Genome, Transcription Factors

Product images:



Coomassie blue staining of purified MAFG protein (Cat# [TP321486]). The protein was produced from HEK293T cells transfected with MAFG cDNA clone (Cat# [RC221486]) using MegaTran 2.0 (Cat# [TT210002]).