

Product datasheet for PH321485

RSRC2 (NM_023012) Human Mass Spec Standard

Product data:

Product Type:	Mass Spec Standards
Description:	RSRC2 MS Standard C13 and N15-labeled recombinant protein (NP_075388)
Species:	Human
Expression Host:	HEK293
Expression cDNA Clone or AA Sequence:	RC221485
Predicted MW:	50.6 kDa
Protein Sequence:	>RC221485 protein sequence Red=Cloning site Green=Tags(s)

MAASDTERDGLAPEKTSPPDRDKKKEQSEVSVSPRASKHHYSRSRSRERKRKSDNEGRKHSRSRSKEG
RRHESKDKSSKKHKSEEHNDEKHSDDKGRERLNSSENGEDRHKRKRKSSRGRSHRSRSRERRHRSRSR
ERKKSRSRSRERKKSRSRSRERKKSRSRSRERKRRIRSRSRSRHRHRTRSRSTRSRDRKRIEKP
RRFSRSLSRTPSPRPFGRNTAMDAQEALARRLERAKKLQEQREKEMVEKQKQOEIAAAAAATGGSVLNVA
ALLASGTQVTPQIAMAAQMAALQAKALAEAGIAPSYYNPAAVNPMKFAEQEKRRKMLWQKKEGDKSQS
AEIWEKLNFGNKDQNVKFRKLMGIKSEDEAGCSSVDEESYKTLKQEEVFRNLDAQYEMARSQHTHTQRGM
GLGFTSSMRGMDAV

TRTRPLEQKLISEEDLAANDILDYKDDDDKV

Tag:	C-Myc/DDK
Purity:	> 80% as determined by SDS-PAGE and Coomassie blue staining
Concentration:	>0.05 µg/µL as determined by microplate BCA method
Labeling Method:	Labeled with [U- ¹³ C ₆ , ¹⁵ N ₄]-L-Arginine and [U- ¹³ C ₆ , ¹⁵ N ₂]-L-Lysine
Buffer:	25 mM Tris-HCl, 100 mM glycine, pH 7.3
Storage:	Store at -80°C. Avoid repeated freeze-thaw cycles.
Stability:	Stable for 3 months from receipt of products under proper storage and handling conditions.
RefSeq:	<u>NP_075388</u>
RefSeq Size:	2349
RefSeq ORF:	1302
Locus ID:	65117

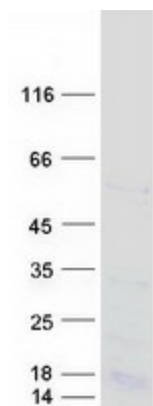


[View online »](#)

UniProt ID: [Q7L4I2](#)

Cytogenetics: 12q24.31

Product images:



Coomassie blue staining of purified RSRC2 protein (Cat# [TP321485]). The protein was produced from HEK293T cells transfected with RSRC2 cDNA clone (Cat# [RC221485]) using MegaTran 2.0 (Cat# [TT210002]).