

Product datasheet for PH321455

HES2 (NM_019089) Human Mass Spec Standard

Product data:

Product Type:	Mass Spec Standards
Description:	HES2 MS Standard C13 and N15-labeled recombinant protein (NP_061962)
Species:	Human
Expression Host:	HEK293
Expression cDNA Clone or AA Sequence:	RC221455
Predicted MW:	18.3 kDa
Protein Sequence:	>RC221455 representing NM_019089 Red=Cloning site Green=Tags(s) MGLPRRAGDAAELRKSLKPLLEKRRRARINQSLSQLKGLILPLLGRENSNCSKLEKADVLEMTVRFLLQEL PASSWPTAAPLPCDSYREGYSACVARLARVLPACRVLEPAVSARLLEHLWRRRAASATLDGGRAGDSSGPS APAPAPASAPVSPSPPCGGLWRPW TRTRPLEQKLISEEDLAANDILDYKDDDDKV
Tag:	C-Myc/DDK
Purity:	> 80% as determined by SDS-PAGE and Coomassie blue staining
Concentration:	>0.05 µg/µL as determined by microplate BCA method
Labeling Method:	Labeled with [U- 13C6, 15N4]-L-Arginine and [U- 13C6, 15N2]-L-Lysine
Buffer:	25 mM Tris-HCl, 100 mM glycine, pH 7.3
Storage:	Store at -80°C. Avoid repeated freeze-thaw cycles.
Stability:	Stable for 3 months from receipt of products under proper storage and handling conditions.
RefSeq:	NP_061962
RefSeq Size:	4259
RefSeq ORF:	519
Synonyms:	bHLHb40
Locus ID:	54626
UniProt ID:	Q9Y543

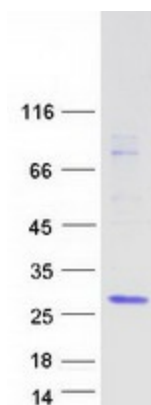


[View online »](#)

Cytogenetics: 1p36.31

Summary: Transcriptional repressor of genes that require a bHLH protein for their transcription.
[UniProtKB/Swiss-Prot Function]

Product images:



Coomassie blue staining of purified HES2 protein (Cat# [TP321455]). The protein was produced from HEK293T cells transfected with HES2 cDNA clone (Cat# [RC221455]) using MegaTran 2.0 (Cat# [TT210002]).