

## Product datasheet for PH321446

### alpha Synuclein (SNCA) (NM\_007308) Human Mass Spec Standard

#### Product data:

Product Type:	Mass Spec Standards
Description:	SNCA MS Standard C13 and N15-labeled recombinant protein (NP_009292)
Species:	Human
Expression Host:	HEK293
Expression cDNA Clone or AA Sequence:	RC221446
Predicted MW:	11.2 kDa
Protein Sequence:	>RC221446 representing NM_007308 Red=Cloning site Green=Tags(s)  MDVFMKGLSKAKEGVVAAAEKTKQGVAEAAGKTKEGVL YVGSKTKEGVVHGVATVAEKTKEQVTNVGGAV VTGVTAVAQKTVEGAGSIAAATGFVKDQLGKEGYQDYEPEA  TRTRPLEQKLISEEDLAANDILDYKDDDDKV
Tag:	C-Myc/DDK
Purity:	> 80% as determined by SDS-PAGE and Coomassie blue staining
Concentration:	>0.05 µg/µL as determined by microplate BCA method
Labeling Method:	Labeled with [U- 13C6, 15N4]-L-Arginine and [U- 13C6, 15N2]-L-Lysine
Buffer:	25 mM Tris-HCl, 100 mM glycine, pH 7.3
Storage:	Store at -80°C. Avoid repeated freeze-thaw cycles.
Stability:	Stable for 3 months from receipt of products under proper storage and handling conditions.
RefSeq:	<a href="#">NP_009292</a>
RefSeq Size:	1096
RefSeq ORF:	336
Synonyms:	NACP; PARK1; PARK4; PD1
Locus ID:	6622
UniProt ID:	<a href="#">P37840</a> , <a href="#">H6UYS5</a>
Cytogenetics:	4q22.1



[View online »](#)

**Summary:**

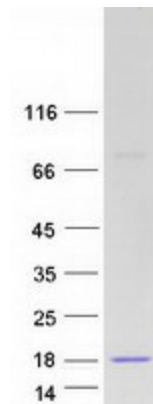
Alpha-synuclein is a member of the synuclein family, which also includes beta- and gamma-synuclein. Synucleins are abundantly expressed in the brain and alpha- and beta-synuclein inhibit phospholipase D2 selectively. SNCA may serve to integrate presynaptic signaling and membrane trafficking. Defects in SNCA have been implicated in the pathogenesis of Parkinson disease. SNCA peptides are a major component of amyloid plaques in the brains of patients with Alzheimer's disease. Alternatively spliced transcripts encoding different isoforms have been identified for this gene. [provided by RefSeq, Feb 2016]

**Protein Families:**

Druggable Genome

**Protein Pathways:**

Alzheimer's disease, Parkinson's disease

**Product images:**

Coomassie blue staining of purified SNCA protein (Cat# [TP321446]). The protein was produced from HEK293T cells transfected with SNCA cDNA clone (Cat# [RC221446]) using MegaTran 2.0 (Cat# [TT210002]).