

## Product datasheet for PH321442

### Protein Kinase D2 (PRKD2) (NM\_001079880) Human Mass Spec Standard

#### Product data:

Product Type:	Mass Spec Standards
Description:	PRKD2 MS Standard C13 and N15-labeled recombinant protein (NP_001073349)
Species:	Human
Expression Host:	HEK293
Expression cDNA Clone or AA Sequence:	RC221442
Predicted MW:	96.5 kDa
Protein Sequence:	>RC221442 representing NM_001079880 Red=Cloning site Green=Tags(s)

MATAPSYAGLPGSPGSPPPPGGLELQSPPLLPQIPAPGSGVSFHIQIGLTREFVLLPAASELAHVK  
QLACSIVDQKFPECIFYGLYDKILLFKHDPTSANLLQLVRSSGDIQEGDLVEVVLASATFEDFQIRPHA  
LTVHSYRAPAFCDHCGEMLFGLVRQGLKCDGCLNYHKRCAFSIPNNCSGARKRRLSSTSLASGHSVRLG  
TSESLPCTAEELSRSTTELLPRRPPSSSSSSASSYTGRPIELDKMLLSKVVPHTFLIHSYTRPTVCQA  
CKKLLKGLFRQGLQCKDCKFNCHKRCATRPNDCLGEALINGDVPMEEATDFSEADKSALMDESEDSGVI  
PGSHSENALHASEEEEEGEGGKAQSSLGYIPLMRVVQSVRHTTRKSSSTTLREGWVVHYSNKDTRLKRHYWR  
LDCKCITLQNNNTNRYKEIPLSEILTVESAQNFSLVPPGTNPHCFEIVTANATYFVGEMPGGTPGGPS  
GQGAEAARGWETAIRQALMPVILQDAPSAPGHAPHRQASLSISVSNSQIQENVDIATVYQIFPDEVLGSG  
QFGVVYGGKHKRTGRDVAVKVIDKLRFPKQESQLRNEVAILQSLRHPGIVNLECMFETPEKVFVMEKL  
HGDMLEMILSSEKGRLEPERLTKFLITQILVALRHLHFKNIVHCDLKPENVLLASADFPQVKLCDGFAR  
IIGKSFRRSVVGTAYLAPEVLLNQGYNRSLDMWSVGVIMYVSLSGTFPFNEDEDINDQIQNAAFMYPA  
SPWSHISAGAIDLINLLQVKMRKRYSDKSLSHPWLQEQYQWLDLRELEGKMGERYITHESSDARWEQF  
AAEHPLPGSGLPTDRDLGGACPPQDHDMDQGLAERISVL

TRTRPLEQKLISEEDLAANDILDYKDDDDKV

Tag:	C-Myc/DDK
Purity:	> 80% as determined by SDS-PAGE and Coomassie blue staining
Concentration:	>0.05 µg/µL as determined by microplate BCA method
Labeling Method:	Labeled with [U- <sup>13</sup> C <sub>6</sub> , <sup>15</sup> N <sub>4</sub> ]-L-Arginine and [U- <sup>13</sup> C <sub>6</sub> , <sup>15</sup> N <sub>2</sub> ]-L-Lysine
Buffer:	25 mM Tris-HCl, 100 mM glycine, pH 7.3
Storage:	Store at -80°C. Avoid repeated freeze-thaw cycles.
Stability:	Stable for 3 months from receipt of products under proper storage and handling conditions.



[View online »](#)

RefSeq: [NP\\_001073349](#)

RefSeq Size: 3338

RefSeq ORF: 2634

Synonyms: HSPC187; nPKC-D2; PKD2

Locus ID: 25865

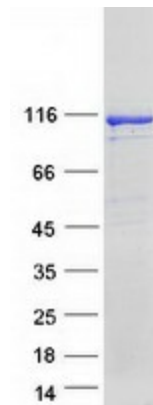
UniProt ID: [Q9BZL6](#)

Cytogenetics: 19q13.32

**Summary:** The protein encoded by this gene belongs to the protein kinase D (PKD) family of serine/threonine protein kinases. This kinase can be activated by phorbol esters as well as by gastrin via the cholecystinin B receptor (CCKBR) in gastric cancer cells. It can bind to diacylglycerol (DAG) in the trans-Golgi network (TGN) and may regulate basolateral membrane protein exit from TGN. Alternative splicing results in multiple transcript variants encoding different isoforms. [provided by RefSeq, Jul 2008]

**Protein Families:** Druggable Genome, Protein Kinase

### Product images:



Coomassie blue staining of purified PRKD2 protein (Cat# [TP321442]). The protein was produced from HEK293T cells transfected with PRKD2 cDNA clone (Cat# [RC221442]) using MegaTran 2.0 (Cat# [TT210002]).