

Product datasheet for PH321431

C19orf75 (SIGLECL1) (NM_173635) Human Mass Spec Standard

Product data:

Product Type:	Mass Spec Standards
Description:	C19orf75 MS Standard C13 and N15-labeled recombinant protein (NP_775906)
Species:	Human
Expression Host:	HEK293
Expression cDNA Clone or AA Sequence:	RC221431
Predicted MW:	21.3 kDa
Protein Sequence:	>RC221431 protein sequence Red=Cloning site Green=Tags(s) MLPLLQLVPAKLLNSSCSLEKTLQCSCSFHGIPTPSVQWMMGGVPVGVGDGMSLQVTSTMLGPWANSTI SLTEEPGMRLLCCEGKNQNGTHALSILLMSRKSSLAQAQFVKGLIQGAIYAGIVIALFLCLLPLIVKH IRKKQAKKAAAIRAKKSSKVRASQELEMSLKPEEPGKPPVATFSESRILEKQDKRAS TRTRPLEQKLI SEEDLAANDILDYKDDDDKV
Tag:	C-Myc/DDK
Purity:	> 80% as determined by SDS-PAGE and Coomassie blue staining
Concentration:	>0.05 µg/µL as determined by microplate BCA method
Labeling Method:	Labeled with [U- 13C6, 15N4]-L-Arginine and [U- 13C6, 15N2]-L-Lysine
Buffer:	25 mM Tris-HCl, 100 mM glycine, pH 7.3
Storage:	Store at -80°C. Avoid repeated freeze-thaw cycles.
Stability:	Stable for 3 months from receipt of products under proper storage and handling conditions.
RefSeq:	NP_775906
RefSeq Size:	1706
RefSeq ORF:	591
Synonyms:	C19orf75; SIGLEC23P; SIGLECP7
Locus ID:	284369
UniProt ID:	Q8N7X8

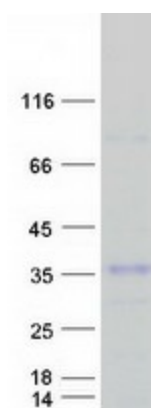


[View online »](#)

Cytogenetics: 19q13.41

Protein Families: Transmembrane

Product images:



Coomassie blue staining of purified SIGLECL1 protein (Cat# [TP321431]). The protein was produced from HEK293T cells transfected with SIGLECL1 cDNA clone (Cat# [RC221431]) using MegaTran 2.0 (Cat# [TT210002]).