

Product datasheet for PH321424

AMD1 (NM_001634) Human Mass Spec Standard

Product data:

Product Type:	Mass Spec Standards
Description:	AMD1 MS Standard C13 and N15-labeled recombinant protein (NP_001625)
Species:	Human
Expression Host:	HEK293
Expression cDNA Clone or AA Sequence:	RC221424
Predicted MW:	38.2 kDa
Protein Sequence:	>RC221424 representing NM_001634 Red=Cloning site Green=Tags(s) MEAAHFFEGTEKLLVWFVSRQQPDANQGSGLRTPRSEWDILLKDVQCSII SVTKTDKQEAYVLSSESM FVSKRRFILKTCGTLLKALVPLLKLARDYSGFDSIQSFFYSRKNFMKPSHQGYPHRNFQEEIEFLNAI FPNGAAYCMGRMNSDCWYLYTLDFPESRVISQPDQTLILMSELDPAVMDQFYMKGVTAKDVTRESGIR DLIPGSVIDATMFNPGYSMNGMKSDGTWYTIHITPEPEFSYVSFETNLSQTSYDDLIRKVVVEVFKPGKF VTTLFVNQSSKCRVTLASPKIEGFKRLDCQSAMFNDYNFVFTSFAKKQQQQS TRTRPLEQKLI SEEDLAANDILDYKDDDDKV
Tag:	C-Myc/DDK
Purity:	> 80% as determined by SDS-PAGE and Coomassie blue staining
Concentration:	>0.05 µg/µL as determined by microplate BCA method
Labeling Method:	Labeled with [U- ¹³ C ₆ , ¹⁵ N ₄]-L-Arginine and [U- ¹³ C ₆ , ¹⁵ N ₂]-L-Lysine
Buffer:	25 mM Tris-HCl, 100 mM glycine, pH 7.3
Storage:	Store at -80°C. Avoid repeated freeze-thaw cycles.
Stability:	Stable for 3 months from receipt of products under proper storage and handling conditions.
RefSeq:	<u>NP_001625</u>
RefSeq Size:	3421
RefSeq ORF:	1002
Synonyms:	ADOMETDC; AMD; SAMDC
Locus ID:	262



[View online »](#)

UniProt ID: [P17707](#), [B4DZ60](#), [A0A088AWN0](#), [Q6NOB2](#)

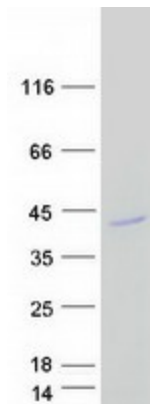
Cytogenetics: 6q21

Summary: This gene encodes an important intermediate enzyme in polyamine biosynthesis. The polyamines spermine, spermidine, and putrescine are low-molecular-weight aliphatic amines essential for cellular proliferation and tumor promotion. Multiple alternatively spliced transcript variants have been identified. Pseudogenes of this gene are found on chromosomes 5, 6, 10, X and Y. [provided by RefSeq, Dec 2013]

Protein Families: Druggable Genome

Protein Pathways: Arginine and proline metabolism, Cysteine and methionine metabolism, Metabolic pathways

Product images:



Coomassie blue staining of purified AMD1 protein (Cat# [TP321424]). The protein was produced from HEK293T cells transfected with AMD1 cDNA clone (Cat# [RC221424]) using MegaTran 2.0 (Cat# [TT210002]).