

Product datasheet for PH321388

TCP11 (NM_001093728) Human Mass Spec Standard

Product data:

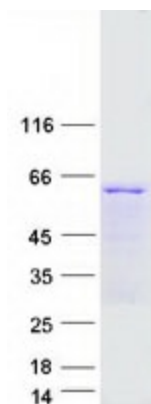
Product Type:	Mass Spec Standards
Description:	TCP11 MS Standard C13 and N15-labeled recombinant protein (NP_001087197)
Species:	Human
Expression Host:	HEK293
Expression cDNA Clone or AA Sequence:	RC221388
Predicted MW:	57.2 kDa
Protein Sequence:	>RC221388 representing NM_001093728 Red=Cloning site Green=Tags(s)
	MTRGGGGGDTISKMPDVKESVPPKYPGDSEGRSCKPETS GPPQEDKSGSEDPPPFLSVTGLTETVNEVSK LSNKIGMNCDYMEEKVLPSSLEGGKVKETVHNAFWDLHKEQLSATPPDFSCALELLKEIKEILLSLLLP RQNRLRIEIEEALDMDLLKQEAHEGALKVLYLSKYVLNMMALLCAPVRDEAVQKLENITDPVWLLRGIFQ VLGRMKMDMVNYTIQSLQPHLQEHSIQYERAKFQELLNKQPSLLNHTTKWL TQAAGDLTMSPTCPDTS SSSVAGPSPNEAANNPEPLSPTMVL CQGFLNLLWDLNEEFPETLLMDRTRLQELKSQLHQL TVMASVL LVASSFSGSVLFGSPQFVDKLRITKSLLED FHSRPEEAILTVSEQVSQEIHQSLKNMGLVALSSDNTAS LMGQLQNI AKKENCVCSVIDQRIHLFLKCLVLGVQRSLDLPGGLT LIEAELAE LGQKFVNLTHHNQQV FGPYYTEILKTLISPAQALETKVESV
	TRTRPLEQKLI SEEDLAANDILDYKDDDDKV
Tag:	C-Myc/DDK
Purity:	> 80% as determined by SDS-PAGE and Coomassie blue staining
Concentration:	>0.05 µg/µL as determined by microplate BCA method
Labeling Method:	Labeled with [U- ¹³ C ₆ , ¹⁵ N ₄]-L-Arginine and [U- ¹³ C ₆ , ¹⁵ N ₂]-L-Lysine
Buffer:	25 mM Tris-HCl, 100 mM glycine, pH 7.3
Storage:	Store at -80°C. Avoid repeated freeze-thaw cycles.
Stability:	Stable for 3 months from receipt of products under proper storage and handling conditions.
RefSeq:	<u>NP_001087197</u>
RefSeq Size:	1929
RefSeq ORF:	1548



[View online »](#)

Synonyms:	D6S230E; FPPR
Locus ID:	6954
UniProt ID:	Q8WWU5
Cytogenetics:	6p21.31
Summary:	Plays a role in the process of sperm capacitation and acrosome reactions. Probable receptor for the putative fertilization-promoting peptide (FPP) at the sperm membrane that may modulate the activity of the adenylyl cyclase cAMP pathway.[UniProtKB/Swiss-Prot Function]

Product images:



Coomassie blue staining of purified TCP11 protein (Cat# [TP321388]). The protein was produced from HEK293T cells transfected with TCP11 cDNA clone (Cat# [RC221388]) using MegaTran 2.0 (Cat# [TT210002]).