

Product datasheet for PH321385

IREB2 (NM_004136) Human Mass Spec Standard

Product data:

| | |
|---------------------------------------|---|
| Product Type: | Mass Spec Standards |
| Description: | IREB2 MS Standard C13 and N15-labeled recombinant protein (NP_004127) |
| Species: | Human |
| Expression Host: | HEK293 |
| Expression cDNA Clone or AA Sequence: | RC221385 |
| Predicted MW: | 104.9 kDa |
| Protein Sequence: | >RC221385 representing NM_004136 Red=Cloning site Green=Tags(s) |

MDAPKAGYAFEYLIETLNDSSHKKFFDVS KLGTKYDVL PYSIRV LLEAAVRNCDGFLMKKEDVMNILDWK
TKQSNVEVPFFPARVLLQDFTGIPAMVDF AAMREAVKTLGGDPEKVHPACPTDL TVDHS LQIDFSKCAIQ
NAPNPGGDLQKAGKLSPLKVQPKLP CRGQTTCRGSCDSGELGRNSGTFSSQIENTPILCPFHLQPVPE
PETVLKNQEVEFGRNRERLQFFKWSSRVFKNVAVIPPGTGMHQINLEYLSRVVFEEKDLLFPDSVVGTD
SHITMVNGLGILGWVGGIETEAVMLGLPVSL TLPEVVGCEL TGSSNPFVTSIDVVLGITKHLRQVGVAG
KFVEFFGSGVSQLSIVDRTTIANMCEYGAIL SFFPVDNVTLKHLEHTGFSKAKLESMETYLKAVKLF RN
DQNSSGEPEYSQVIQINLNSIVSVSGPKRPQDRVAVTDMKSDFQACLNEKVGFGFQIAAEKQKDIVSI
HYEGSEYKLSHGSVVI AAVISCTNNCNPSVMLAAGLLAKKAVEAGLRVKPYIRTSLSPGSGMVTHYLS SS
GVL P YL SKLGF EIVGYGCSTCVGNTAPLSDAVLNAV KQGD LVT CGILSGNKNFEGRLCDCVRANYL ASPP
LVVAYAIAGTVNIDFQTEPLGTDPTGKNIYL HDI WPSREEVHRVEEEHVILSMFKALKDKDIEMGNKRWNS
LEAPDSVLPWDLKSTYIRCPSFFDKL TKEPIALQAIENAHVLL YLGDSVTTDHI SPAGSIARNSAAAKY
LTNRGLTPREFNSYGARRGNDVMTRGTFANIKLFNKFIGKPAPKTIHFPSGQTL DVFEAAEL YQKEGIP
LII LAGKKY GSGNSRDWAAKGPYLLGVKAVLAESYEKIHKDH LIGIGIAPLQFLPGENADSLGLSGRET F
SLTFPEELSPGITLNIQTSTGKVF SVIASFEDDVEITLYKHGGLLN FVARKFS

TRTRPLEQKLI SEEDLAANDILDYKDDDDKV

| | |
|------------------|--|
| Tag: | C-Myc/DDK |
| Purity: | > 80% as determined by SDS-PAGE and Coomassie blue staining |
| Concentration: | >0.05 µg/µL as determined by microplate BCA method |
| Labeling Method: | Labeled with [U- ¹³ C ₆ , ¹⁵ N ₄]-L-Arginine and [U- ¹³ C ₆ , ¹⁵ N ₂]-L-Lysine |
| Buffer: | 25 mM Tris-HCl, 100 mM glycine, pH 7.3 |
| Storage: | Store at -80°C. Avoid repeated freeze-thaw cycles. |
| Stability: | Stable for 3 months from receipt of products under proper storage and handling conditions. |



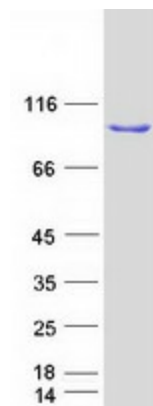
[View online >](#)

| | |
|---------------|---|
| RefSeq: | NP_004127 |
| RefSeq Size: | 3928 |
| RefSeq ORF: | 2889 |
| Synonyms: | ACO3; IRE-BP 2; IRE-BP2; IRP2; IRP2AD; NDCAMA |
| Locus ID: | 3658 |
| UniProt ID: | P48200 , D3DW85 |
| Cytogenetics: | 15q25.1 |

Summary: The protein encoded by this gene is an RNA-binding protein that acts to regulate iron levels in the cells by regulating the translation and stability of mRNAs that affect iron homeostasis under conditions when iron is depleted. When iron levels are low, this protein binds to iron-responsive elements (IRES), stem-loop structures located either in the 5' or 3' UTRs. Binding to the 5' UTR represses translation, while binding to the 3' UTR inhibits mRNA degradation. When iron is found in the cell, this protein is degraded in a F-box and leucine rich repeat protein 5-dependent manner. Variants in this gene have been associated with lung cancer and chronic obstructive pulmonary disease (COPD). Alternative splicing results in multiple transcript variants encoding different isoforms. [provided by RefSeq, Aug 2017]

Protein Families: Druggable Genome

Product images:



Coomassie blue staining of purified IREB2 protein (Cat# [TP321385]). The protein was produced from HEK293T cells transfected with IREB2 cDNA clone (Cat# [RC221385]) using MegaTran 2.0 (Cat# [TT210002]).