

## Product datasheet for PH321379

### CD21 (CR2) (NM\_001877) Human Mass Spec Standard

#### Product data:

Product Type:	Mass Spec Standards
Description:	CR2 MS Standard C13 and N15-labeled recombinant protein (NP_001868)
Species:	Human
Expression Host:	HEK293
Expression cDNA Clone or AA Sequence:	RC221379
Predicted MW:	113 kDa
Protein Sequence:	>RC221379 protein sequence Red=Cloning site Green=Tags(s)

MGAAGLLGVFLALVAPGVLGISCGSPPIILNGRISYYSTPIAVGTVIRYSCSGTFRLIGEKSLLCITKDK  
VDGTWDPKPAKCEYFNKYSSCPEPIVPGGYKIRGSTPYRHGDSVTFACKTNFSMNGNKSVMCQANNMWP  
TRLPTCVSVFPLECPALPMIHNGHHTSENVGSIAPGLSVTYSCESGYLLVGEKIINCLSSGKWSAVPPTC  
EEARCKSLGRFPNGKVKEPPIILRVGVTANFFCDEGYRLQPPSSRCVIAQGQVAWTKMPVCEEIFCPSP  
PILNGRHIGNSLANVSYGSIVTYTCDPDEEGVNFILIGESTLRCTVDSQKTGTWSPAPRCELSTSAVQ  
CPHPQILRGRMVSQKDRYTYNDTVIFACMFGFTLKGSKQIRCNAQGTWEPSPAPVCEKECQAPPNINLNGQ  
KEDRHMVRFDPGTSIKYSCNPGYVLVGEESIQTSEGVWTPPVQCKVAACEATGRQLLTKPQHQFVRPD  
VNSSCGEGYKLSGSVYQECQGTIPWFMEIRLCKEITCPPPPVIYNGAHTGSSLEDFPYGTTVTYTCNPGP  
ERGVFSLIGESTIRCTSDQERGTWSGPAPLCKLSLLAVQCASHVHIANGYKISGKEAPYFYNDTVTFKC  
YSGFTLKGNSQIRCKADNTWDPEIPVCEKETCQHVRQSLQELPAGSRVELVNTSCQDGYQLTGHAYQMCQ  
DAENGIWFKKIPLCKVIHCHPPPVIYVNGKHTGMAENFLYGNEVSYECDQGFYLLGEKQLQCRSDSKGHG  
SWSGPSPQCLRSPPVTRCPNPEVKHGYKLNKTHSAYSHNDIVYVDCNPGFIMNGSRVIRCHTDNTWVPGV  
PTCIKKAFIGCPPPKTPNGNHTGGNIARFSPGMSILYSCDQGYLLVGEALLCTHEGTWSQPAPHCKEV  
NCSSPADMDGIQKLEPRKMYQYGAVVTLCECDGYMLEGSPQSQSDHQWNPPLAVCRSRSLAPVLCGI  
AAGLILLTFLIVITLYVISKHRERNYYTDSQKEAFHLEAREVYSVDPYNPAS

TRTRPLEQKLISEEDLAANDILDYKDDDDKV

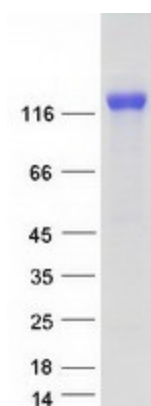
Tag:	C-Myc/DDK
Purity:	> 80% as determined by SDS-PAGE and Coomassie blue staining
Concentration:	>0.05 µg/µL as determined by microplate BCA method
Labeling Method:	Labeled with [U- <sup>13</sup> C <sub>6</sub> , <sup>15</sup> N <sub>4</sub> ]-L-Arginine and [U- <sup>13</sup> C <sub>6</sub> , <sup>15</sup> N <sub>2</sub> ]-L-Lysine
Buffer:	25 mM Tris-HCl, 100 mM glycine, pH 7.3
Storage:	Store at -80°C. Avoid repeated freeze-thaw cycles.



[View online »](#)

<b>Stability:</b>	Stable for 3 months from receipt of products under proper storage and handling conditions.
<b>RefSeq:</b>	<a href="#">NP_001868</a>
<b>RefSeq Size:</b>	4007
<b>RefSeq ORF:</b>	3099
<b>Synonyms:</b>	C3DR; CD21; CR; CVID7; SLEB9
<b>Locus ID:</b>	1380
<b>UniProt ID:</b>	<a href="#">P20023</a>
<b>Cytogenetics:</b>	1q32.2
<b>Summary:</b>	This gene encodes a membrane protein, which functions as a receptor for Epstein-Barr virus (EBV) binding on B and T lymphocytes. Genetic variations in this gene are associated with susceptibility to systemic lupus erythematosus type 9 (SLEB9). Alternatively spliced transcript variants encoding different isoforms have been found for this gene.[provided by RefSeq, Sep 2009]
<b>Protein Families:</b>	Druggable Genome, Transmembrane
<b>Protein Pathways:</b>	B cell receptor signaling pathway, Complement and coagulation cascades, Hematopoietic cell lineage

### Product images:



Coomassie blue staining of purified CR2 protein (Cat# [TP321379]). The protein was produced from HEK293T cells transfected with CR2 cDNA clone (Cat# [RC221379]) using MegaTran 2.0 (Cat# [TT210002]).