

Product datasheet for PH321342

VMAT2 (SLC18A2) (NM_003054) Human Mass Spec Standard

Product data:

Product Type:	Mass Spec Standards
Description:	SLC18A2 MS Standard C13 and N15-labeled recombinant protein (NP_003045)
Species:	Human
Expression Host:	HEK293
Expression cDNA Clone or AA Sequence:	RC221342
Predicted MW:	55.5 kDa
Protein Sequence:	>RC221342 representing NM_003054 Red=Cloning site Green=Tags(s)

MALSELALVRLQESRRSRKLLILFIVFLALLLDNMLLTVVPIIPSYLYSIKHEKNATEIQTARPVHTAS
ISDSFQSIFSYDNSTMVTGNATRDLTQHQTATQHMVTNASAVPSPDCPSEDKDLLNENVQVGLLFASKAT
VQLITNPFIGLLTNRIGYPIPIFAGFCIMFVSTIMFAFSSSYAFLLIARSLQGIGSSCSSVAGMGLASV
YTDDEERGNVMGIALGGLAMGVLVGPFFGSVLVEFVGKTAFLVLAALVLLDGAIQFLVLPQSRVQPEAQ
KGTPLTLLKDPYILIAAGSICFANMGIAMLEPALPIWMMETMCSRKWLGVAFPLPASIYLGITNIFGI
LAHKMGRWLCALLGMIIIVGVSILCIPFAKNIYGLIAPNFGVGFVIGMVDSSMMPIMGYLVDLRHVSVYGS
VYAIADVAFCMGYAIGPSAGGAIKAIGFPWLMTIIGIIDILFAPLCFFLRSPPAKEEKMAILMDHNCPI
KTKMYTQNNIQSYPIGEDEESES

SGPTRRRLEQKLI SEEDLAANDILDYKDDDDKV

Tag:	C-Myc/DDK
Purity:	> 80% as determined by SDS-PAGE and Coomassie blue staining
Concentration:	>0.05 µg/µL as determined by microplate BCA method
Labeling Method:	Labeled with [U- ¹³ C ₆ , ¹⁵ N ₄]-L-Arginine and [U- ¹³ C ₆ , ¹⁵ N ₂]-L-Lysine
Buffer:	25 mM Tris-HCl, 100 mM glycine, pH 7.3
Storage:	Store at -80°C. Avoid repeated freeze-thaw cycles.
Stability:	Stable for 3 months from receipt of products under proper storage and handling conditions.
RefSeq:	<u>NP_003045</u>
RefSeq Size:	1898
RefSeq ORF:	1542



[View online »](#)

Synonyms: PKDYS2; SVAT; SVMT; VAT2; VMAT2

Locus ID: 6571

UniProt ID: [Q05940](#)

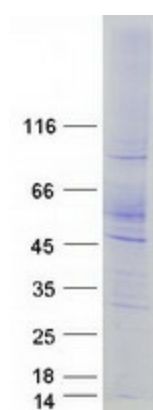
Cytogenetics: 10q25.3

Summary: This gene encodes an transmembrane protein that functions as an ATP-dependent transporter of monoamines, such as dopamine, norepinephrine, serotonin, and histamine. This protein transports amine neurotransmitters into synaptic vesicles. Polymorphisms in this gene may be associated with schizophrenia, bipolar disorder, and other neurological/psychiatric ailments. [provided by RefSeq, Jun 2018]

Protein Families: Transmembrane

Protein Pathways: Parkinson's disease

Product images:



Coomassie blue staining of purified SLC18A2 protein (Cat# [TP321342]). The protein was produced from HEK293T cells transfected with SLC18A2 cDNA clone (Cat# [RC221342]) using MegaTran 2.0 (Cat# [TT210002]).