

Product datasheet for PH321331

KIF3A (NM_007054) Human Mass Spec Standard

Product data:

Product Type:	Mass Spec Standards
Description:	KIF3A MS Standard C13 and N15-labeled recombinant protein (NP_008985)
Species:	Human
Expression Host:	HEK293
Expression cDNA Clone or AA Sequence:	RC221331
Predicted MW:	80 kDa
Protein Sequence:	>RC221331 representing NM_007054 Red=Cloning site Green=Tags(s)

MPINKSEKPEscDNVkvVRCRPLNEREKSMCYKQAVSVDEMrgTITVHKTDSSNEPPKTFtFDtVFGPE
SKQLDVYNLTARPIIDSvLEgYngTIFAYGQTGTGKFTMEGVRAIPELRGIIPNSFAHIFGHIAKAEGD
TRFLVRYSYLEIYNeeVRdLLGkdQTQRLEVKerPDVgVYIKDLsAYVVNNADDMDRIMTLGHKNRSVGA
TNMNEHSSRSHAIftITIEcSEKIDGNMHVRMGKLHLVdLAGSERQAKTGATGQRLKEATKINLSLSTL
GNVISALVDGKSTHVPYRNSKLTRLLQDSLGGNSKTMmCANIGPADYNYDETISTLRYANRAKNIKNKAR
INEDPKDALLRQFQKEIEELKKLEEGEEISGSDISGSEEDDDEEGEVGEDGekRKRKRGKKVSPDKMI
EMQAKIDEERKALeTKLDMEEEERNKARAELEKREKDLLKAQqEHQSLLEKLSALEKKVIvGGVDLLAKA
EEQEKLLeeSNMELEERRKRAEQLRRELEEKERLDIEEKYtSLQEEAQGKTKKLKkVWTMLMAAKSEM
ADLQqEHQREIEGLLENIRQLSRELRLQMLIIDNFIPRDYQEMIEYVHWNEDIGEWQLKCVAYTGNMNR
KQTPVPDKKEKDPFEVDLSHVYLAYTEESLRQSLMKLERPRTSGKARPKTGRKRSAKpETVIDSLLQ

TRTRPLEQKLISEEDLAANDILDYKDDDDKV

Tag:	C-Myc/DDK
Purity:	> 80% as determined by SDS-PAGE and Coomassie blue staining
Concentration:	>0.05 µg/µL as determined by microplate BCA method
Labeling Method:	Labeled with [U- 13C6, 15N4]-L-Arginine and [U- 13C6, 15N2]-L-Lysine
Buffer:	25 mM Tris-HCl, 100 mM glycine, pH 7.3
Storage:	Store at -80°C. Avoid repeated freeze-thaw cycles.
Stability:	Stable for 3 months from receipt of products under proper storage and handling conditions.
RefSeq:	NP_008985
RefSeq Size:	6257



[View online »](#)

RefSeq ORF: 2097

Synonyms: FLA10; KLP-20

Locus ID: 11127

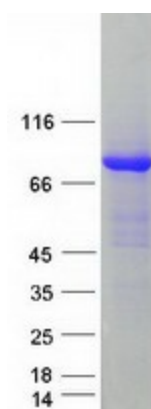
UniProt ID: [Q9Y496](#), [Q05CT3](#)

Cytogenetics: 5q31.1

Summary: Microtubule-based anterograde translocator for membranous organelles. Plus end-directed microtubule sliding activity in vitro. Plays a role in primary cilia formation. Plays a role in centriole cohesion and subdistal appendage organization and function. Regulates the formation of the subdistal appendage via recruitment of DCTN1 to the centriole. Also required for ciliary basal feet formation and microtubule anchoring to mother centriole. [UniProtKB/Swiss-Prot Function]

Protein Families: Druggable Genome

Product images:



Coomassie blue staining of purified KIF3A protein (Cat# [TP321331]). The protein was produced from HEK293T cells transfected with KIF3A cDNA clone (Cat# [RC221331]) using MegaTran 2.0 (Cat# [TT210002]).