

## Product datasheet for PH321305

### FER1L6 (NM\_001039112) Human Mass Spec Standard

#### Product data:

Product Type:	Mass Spec Standards
Description:	FER1L6 MS Standard C13 and N15-labeled recombinant protein (NP_001034201)
Species:	Human
Expression Host:	HEK293
Expression cDNA Clone or AA Sequence:	RC221305
Predicted MW:	209.1 kDa



[View online »](#)

**Protein Sequence:** >RC221305 representing NM\_001039112  
 Red=Cloning site Green=Tags(s)

MFGLKVKKKRNKAEKGLILANKAAKDSQGDTEALQEESHQEGPRGDLVHDDASIFPVPSASPKRRSKLL  
 TKIHDGEVRSQNYQIAITITEARQLVGENIDPVVTIEIGDEKKQSTVKEGTNSPFYNEYVDFDFIGPQVH  
 LFDKIIKISVFFHKLIGSVLIGSFKVDLGTVYNQPGHQFCNKWALLTDPGDIRTGKGYLKCDISVMGKG  
 DVLKTSPKTSDTEEPIEKLLIPNGFPLERPWARFYVRLYKAEGLPKMNSSIMANVTAKFVGDSDKLVDP  
 FVEVSFAGQMGRITVQKNCADPVWHEQVIFKEMFPPLCRRVKIQVWDEGSMNDVALATHFIDLKKISNEQ  
 DGDKGFLPTFGPAWINLYGSPRNHSLMDDYQEMNEGFEGVSVFRGRILVEIAVEILSGRAQESKFSKALK  
 ELKLPKSKDKSSKSGKDKADKTEDGKSQQASNKTNSTEVEVESFDVPPEIVPEKNEEFLFGAFFEATM  
 IDRKIGDKPISFEVSIGNFNLIDGGSHYGSKSAESAEDLLPLLHEGQGDVAHDVPIPMASSTHPEKP  
 LVTEGNNRYNLPFEAKKPCVYFISWGDQTFRLHWSNMLEKMAFL EESIEEVRELIKISQEAPEEKMK  
 TVLSDFISRSSAFISEAEKPKMLNQTTLDKKRLTLCWQLEAMCKEAKGIIQQQKKLSVDEMIHEAQN  
 FVEKIRFLVDEPQHTIPDVF IWMLSNRRVAYARIASKDLLYSPVAGQMGKHCYKIKTHFLKPPGKRPAG  
 WSVQAKVDVYLWLSIKHASAILDNLPVGYEAEMSSKAGTNNHPPSNLLYQEQHVFLRAHMYQARGLIA  
 ADSNGLSDPFKVTFLSHCQTTKIIISQTLSPWNQMLLFNDLVLHGDVKELAESPLVVVELYDSDAVGK  
 PEYLGATVAAPVVKLADQDYEPRLCYHPIFCGNLSGDLLAVFELLQVPPSGLQGLPPVEPPDITQIYP  
 VPANIRPVL SKYRVEVLFWGVREMKKVQLLSVDRPQALIECGGQGVKSCVIQSYKNNPNFSIQADAFEVE  
 LPENELHPPLSICVVDWRAFGRSTLVGTYTINYLKQFLCKLREPLAPITQVDGTQPGHDISDSL TATES  
 SGAHSSSQDPPADHIYVDVEPPPTVVPDSAQAQPAILVDVPDSSPMLPEHTPVAQEPPKDGKPKDPRKP  
 SRRSTKRRKRTIADESAENVIDWWSKYASLKAQKAKERNPKGKKGNTAKPDEVVVDIEDGPKKKKDK  
 MLKKKPKDDGIPNLAAILQIYDGDLESEFNFDVWVTFELFRGKSTEDDHGLDGDVXVIGKFGSFCIYKS  
 PQDSSSEDSGQLRIQQGIPNHPVTVLIRVYIVAAFNLSPADPDGKSDPYIVIKL GKTEIKDRDKYIPKQ  
 LNPVFGRSFEIQATFPKESLLSILYDHDMIGTDDLIGETKIDLENRFYSKHRAICGLQSQYIEGYNAW  
 RDTSKPTEILTKLCKDNKLDGPYFHPGKIQIGNQVFSGKTIFTEEDTDETVESYEHLALKVLHSWEDIPE  
 VGCRLVPEHIETRPLYHKDKPGMEQGRQLQMWDMPFKDMPQPPVDISPRRPKGYELRVTIWNTEVDIL  
 EDENIFTGQKSSDIYVKGWLKGLEDDKQETDVHYNSLTGEGNFNWRFLFPFYQLPAEQM VITKRENIFS  
 LEKMECKTPAVLVLQVWDFERLSSDDFLGTLEMNLSFPRAAKSAKACDLAKFENASEETKISIFQQKRV  
 RGWWPFSKSKELTGKVEAEFHLVTAEEAEKNPVGKARKEPEPLAKPNRPDTSFSWFMSPFKCLYYLIWKN  
 YKYYIIIAFILIIILIIIFLVLFYITLPGAISRRIIVVGS

TRTRPLEQKLISEEDLAANDILDYKDDDDKV

**Tag:** C-Myc/DDK

**Purity:** > 80% as determined by SDS-PAGE and Coomassie blue staining

**Concentration:** >0.05 µg/µL as determined by microplate BCA method

**Labeling Method:** Labeled with [U- <sup>13</sup>C<sub>6</sub>, <sup>15</sup>N<sub>4</sub>]-L-Arginine and [U- <sup>13</sup>C<sub>6</sub>, <sup>15</sup>N<sub>2</sub>]-L-Lysine

**Buffer:** 25 mM Tris-HCl, 100 mM glycine, pH 7.3

**Storage:** Store at -80°C. Avoid repeated freeze-thaw cycles.

**Stability:** Stable for 3 months from receipt of products under proper storage and handling conditions.

**RefSeq:** [NP\\_001034201](#)

**RefSeq Size:** 6058

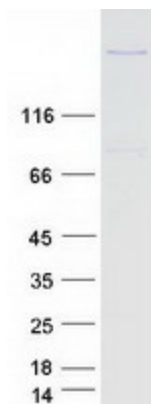
**RefSeq ORF:** 5571

**Synonyms:** C8ORFK23

**Locus ID:** 654463

UniProt ID: [Q2WGI9](#)  
Cytogenetics: 8q24.13  
Protein Families: Transmembrane

### Product images:



Coomassie blue staining of purified FER1L6 protein (Cat# [TP321305]). The protein was produced from HEK293T cells transfected with FER1L6 cDNA clone (Cat# [RC221305]) using MegaTran 2.0 (Cat# [TT210002]).