

Product datasheet for PH321297

CD11a (ITGAL) (NM_002209) Human Mass Spec Standard

Product data:

Product Type:	Mass Spec Standards
Description:	ITGAL MS Standard C13 and N15-labeled recombinant protein (NP_002200)
Species:	Human
Expression Host:	HEK293
Expression cDNA Clone or AA Sequence:	RC221297
Predicted MW:	128.77 kDa
Protein Sequence:	>RC221297 representing NM_002209 Red=Cloning site Green=Tags(s)

MKDSCITVMAMALLSGFFFFAPASSYNLDVRGARSFSPPRAGRHFYRVLQVGNQVIVGAPGEGNSTGSL
YQCQSGTGHCLPVTLRGSNYTSKYLGMTLATDPTDGSILACDPGLSRTCDQNTYLSGLCYLFRQNLQGPM
LQGRPGFQECIKGNVDLVFLFDGMSLQPDFQKILDFMKDVMKKLSNTSYQFAAVQFSTSYKTEFDFSD
YVYKRKDPDALLKHVHMLLLTNTFGAINYVATEVFREELGARPDATKVLIIITDGEATDSGNIDAADKII
RYIIGIGKHFQTKESQETLHKFASKPASEFVKILDTFEKLKDLFTELQKKIYVIEGTSKQDLTSFMELSS
SSGISADLSRGHAVVGAVGAKDWAGGFLDLKADLQDDTFIGNEPLTPEVRAGYLGYVTWLPQRKTSLL
ASGAPRYQHMGRVLLFQEPQGGHWSQVQTIHGTQIGSYFGGELCGVDVDQDGETELLLIGAPLFYGEQR
GGRVFIYQRRQLGFEVSELQGDPGYPLGRFGEAITALTDINGDGLVDVAVGAPLEEQGAAYIFNGRHGG
LSPQPSQRIEGTQVLSGIQWFGRSIHGKDLQEGDGLADVAVGAESQMIIVLSSRPVDMVTLMSPFAEIP
VHEVECSYSTSNMKKEGVNITICFQIKSLIPQFQGRLVANLTYTLQLDGHRRRRGLFPGGRHELRRNIA
VTTSMCTDFSFHFPVCVQDLISPINVSLNFWEEEGTPRDQRAQGDIPPILRPSLHSETWEIPFEKN
CGEDKKCEANLRVSFSPARSRALRLTAFASLSVELSLSNLEEDAYWVQLDLHFPPGLSFRKVEMLKPHSQ
IPVSCEELPEESRLLSRALSCNVSSPIFKAGHSVALQMMFNTLVNSSWGDSVELHANVTCNNEDSDLLED
NSATTIIPILYPINILIQDQEDSTLYVSFTPKGPKIHQVKHMYQVRIQPSIHDHNIPTLEAVVGPQPPS
EGPIHQWSVQMEPPVPCHYEDLERLPDAAEPLPGALFRCPVVFQRQEILVQVIGTLELVGEIEASSMFS
LCSSLSISFNSSKHFLYGSNASLAQVVMKVDVVYEKQMLYLVLVSGIGGLLLLLLIFIVLYKVGFFKRN
LKEKMEAGRGVPNGIPAEDSEQLASGQEAGDPGCLKPLHEKDSSESGGK

TRTRPLEQKLISEEDLAANDILDYKDDDDKV

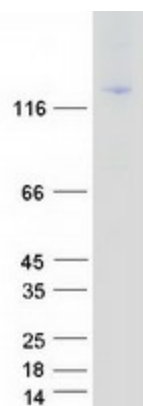
Tag:	C-Myc/DDK
Purity:	> 80% as determined by SDS-PAGE and Coomassie blue staining
Concentration:	>0.05 µg/µL as determined by microplate BCA method
Labeling Method:	Labeled with [U- ¹³ C ₆ , ¹⁵ N ₄]-L-Arginine and [U- ¹³ C ₆ , ¹⁵ N ₂]-L-Lysine
Buffer:	25 mM Tris-HCl, 100 mM glycine, pH 7.3



[View online »](#)

Storage:	Store at -80°C. Avoid repeated freeze-thaw cycles.
Stability:	Stable for 3 months from receipt of products under proper storage and handling conditions.
RefSeq:	NP_002200
RefSeq Size:	5133
RefSeq ORF:	3510
Synonyms:	CD11A; LFA-1; LFA1A
Locus ID:	3683
UniProt ID:	P20701 , B2RAL6
Cytogenetics:	16p11.2
Summary:	ITGAL encodes the integrin alpha L chain. Integrins are heterodimeric integral membrane proteins composed of an alpha chain and a beta chain. This I-domain containing alpha integrin combines with the beta 2 chain (ITGB2) to form the integrin lymphocyte function-associated antigen-1 (LFA-1), which is expressed on all leukocytes. LFA-1 plays a central role in leukocyte intercellular adhesion through interactions with its ligands, ICAMs 1-3 (intercellular adhesion molecules 1 through 3), and also functions in lymphocyte costimulatory signaling. Two transcript variants encoding different isoforms have been found for this gene. [provided by RefSeq, Jul 2008]
Protein Families:	Druggable Genome, ES Cell Differentiation/IPS, Transmembrane
Protein Pathways:	Cell adhesion molecules (CAMs), Leukocyte transendothelial migration, Natural killer cell mediated cytotoxicity, Regulation of actin cytoskeleton, Viral myocarditis

Product images:



Coomassie blue staining of purified ITGAL protein (Cat# [TP321297]). The protein was produced from HEK293T cells transfected with ITGAL cDNA clone (Cat# [RC221297]) using MegaTran 2.0 (Cat# [TT210002]).