

Product datasheet for PH321269

SMYD1 (NM_198274) Human Mass Spec Standard

Product data:

Product Type:	Mass Spec Standards
Description:	SMYD1 MS Standard C13 and N15-labeled recombinant protein (NP_938015)
Species:	Human
Expression Host:	HEK293
Expression cDNA Clone or AA Sequence:	RC221269
Predicted MW:	56.6 kDa
Protein Sequence:	>RC221269 protein sequence Red=Cloning site Green=Tags(s)

MTIGRMENVEVFTAEGKGRGLKATKEFWAADIIFAERAYSAVVFDLSLVNFVCHTCFKRQEKLRHRCGQCKF
 AHYCDRTCQKDAWLNHKNECSAIKRYGKVPNENIRLAARIMWRVEREGTGLTEGCLVSVDDLQNHVEHFG
 EEEQKDLRVDVDTFLQYWPPQSQQFSMQYISHIFGVINCNGFTLSDQRGLQAVGVGIFPNLGLVNHDCWP
 NCTVIFNNGNHEAVKSMFHTQMRIELRALGKISEGEELTVSYIDFLNVSEERKRQLKKQYYFDCTCEHCQ
 KKLKDDLFLGVKDNPKPSQEVVKEMIQFSKDTLEKIDKARSEGLYHEVVKLCRECLEKQEPVFADTNIYM
 LRMLSIVSEVLSYLQAFEEASFYARRMVDGYMKLYHPNNAQLGMAVMRAGLTNWHAGNIEVGHGMICKAY
 AILLVTHGSPHPITKDLAMRVQTEMLRMFRQNEFMYYKMREAALNNQPMQVMAEPSNEPSPALFHKKQ

TRTRPLEQKLISEEDLAANDILDYKDDDDKV

Tag:	C-Myc/DDK
Purity:	> 80% as determined by SDS-PAGE and Coomassie blue staining
Concentration:	>0.05 µg/µL as determined by microplate BCA method
Labeling Method:	Labeled with [U- ¹³ C ₆ , ¹⁵ N ₄]-L-Arginine and [U- ¹³ C ₆ , ¹⁵ N ₂]-L-Lysine
Buffer:	25 mM Tris-HCl, 100 mM glycine, pH 7.3
Storage:	Store at -80°C. Avoid repeated freeze-thaw cycles.
Stability:	Stable for 3 months from receipt of products under proper storage and handling conditions.
RefSeq:	NP_938015
RefSeq Size:	4441
RefSeq ORF:	1470
Synonyms:	BOP; KMT3D; ZMYND18; ZMYND22



[View online »](#)

Locus ID: 150572

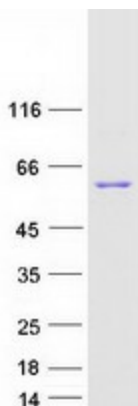
UniProt ID: [Q8NB12](#), [Q5HYE8](#)

Cytogenetics: 2p11.2

Summary: Methylates histone H3 at 'Lys-4' (H3K4me), seems able to perform both mono-, di-, and trimethylation. Acts as a transcriptional repressor. Essential for cardiomyocyte differentiation and cardiac morphogenesis.[UniProtKB/Swiss-Prot Function]

Protein Families: Druggable Genome

Product images:



Coomassie blue staining of purified SMYD1 protein (Cat# [TP321269]). The protein was produced from HEK293T cells transfected with SMYD1 cDNA clone (Cat# [RC221269]) using MegaTran 2.0 (Cat# [TT210002]).