

## Product datasheet for PH321241

### FCHSD2 (NM\_014824) Human Mass Spec Standard

#### Product data:

Product Type:	Mass Spec Standards
Description:	FCHSD2 MS Standard C13 and N15-labeled recombinant protein (NP_055639)
Species:	Human
Expression Host:	HEK293
Expression cDNA Clone or AA Sequence:	RC221241
Predicted MW:	77.6 kDa
Protein Sequence:	>RC221241 representing NM_014824 Red=Cloning site Green=Tags(s)

MQKLASQYLKRDWPGVKADDRNDYRSMYPVWKSFLGTMQVAQSRMNICENYKNFISEPARTVRSLSKEQQ  
LKRCVDQLTKIQTELQETVKDLAKGKKKYFETEQMAHAVREKADIEAKSKLSLFQSRIISLQKASVKLKAR  
RSECNSKATHARNDYLLTLAAANAHQDRYYQTDLVNIMKALDGNVYDHLKDYLIAFSRTELETQAVQNT  
FQFLENSKVVVDYLNQLFLQENAVFHKPQPFQFQPCSDTSRQLESETGTTEEHSLNKEARKWATRVA  
REHKNIHVHQQRVLNDLECHGAAVSEQSRAELEQKIDEARENIRKAEI IKLKAEARLDLLKQIGVSVDTWL  
KSAMNQVMELENERWARPPAVTSNGTLHSLNADTEREEGEEFEDNMDVFDSSSSPSGTLRNYPLTCKV  
VYSYKASQDEL TIEEHEVLEVI EDGDMEDWVKARNKVGQVGYVPEKYLQFPTSNSLLSMLQSLAALDSR  
SHTSSNSTEAE LVSGSLNGDASVCFVKALYDYEGQTDDEL SFPEGAIIRILNKENQDDGDFWEGEFNGRI  
GVFPSVLVEELSASENGDTPWMREIQISPSPKPHASLPPLPLYDQPPSSPYSPDKRSSLYFPRSPSANE  
KSLHAESPGFSQASRHTPETSYGKLRPVRAAPPPTQNHRRAEAKIEDVEITLV

TRTRPLEQKLI SEEDLAANDILDYKDDDDKV

Tag:	C-Myc/DDK
Purity:	> 80% as determined by SDS-PAGE and Coomassie blue staining
Concentration:	>0.05 µg/µL as determined by microplate BCA method
Labeling Method:	Labeled with [U- 13C6, 15N4]-L-Arginine and [U- 13C6, 15N2]-L-Lysine
Buffer:	25 mM Tris-HCl, 100 mM glycine, pH 7.3
Storage:	Store at -80°C. Avoid repeated freeze-thaw cycles.
Stability:	Stable for 3 months from receipt of products under proper storage and handling conditions.
RefSeq:	<a href="#">NP_055639</a>
RefSeq Size:	4341



[View online »](#)

RefSeq ORF: 2052

Synonyms: NWK; NWK1; SH3MD3

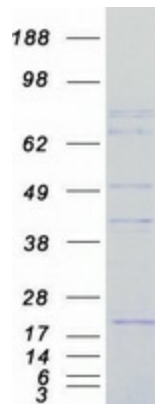
Locus ID: 9873

UniProt ID: [O94868](#)

Cytogenetics: 11q13.4

**Summary:** Adapter protein that plays a role in endocytosis via clathrin-coated pits. Contributes to the internalization of cell surface receptors, such as integrin ITGB1 and transferrin receptor (PubMed:29887380). Promotes endocytosis of EGFR in cancer cells, and thereby contributes to the down-regulation of EGFR signaling (PubMed:30249660). Recruited to clathrin-coated pits during a mid-to-late stage of assembly, where it is required for normal progress from U-shaped intermediate stage pits to terminal, omega-shaped pits (PubMed:29887380). Binds to membranes enriched in phosphatidylinositol 3,4-bisphosphate or phosphatidylinositol 3,4,5-trisphosphate (PubMed:29887380). When bound to membranes, promotes actin polymerization via its interaction with WAS and/or WASL which leads to the activation of the Arp2/3 complex. Does not promote actin polymerisation in the absence of membranes (PubMed:29887380).[UniProtKB/Swiss-Prot Function]

### Product images:



Coomassie blue staining of purified FCHSD2 protein (Cat# [TP321241]). The protein was produced from HEK293T cells transfected with FCHSD2 cDNA clone (Cat# [RC221241]) using MegaTran 2.0 (Cat# [TT210002]).