

Product datasheet for PH321235

Peroxiredoxin 1 (PRDX1) (NM_002574) Human Mass Spec Standard

Product data:

Product Type:	Mass Spec Standards
Description:	PRDX1 MS Standard C13 and N15-labeled recombinant protein (NP_002565)
Species:	Human
Expression Host:	HEK293
Expression cDNA Clone or AA Sequence:	RC221235
Predicted MW:	22.1 kDa
Protein Sequence:	>RC221235 protein sequence Red=Cloning site Green=Tags(s) MSSGNAKIGHAPNFKATAVMPDGQFKDISLSDYKGYVVFYPLDFTFVCPTEIIAFSDRAEEFKKLN CQVIGASVDSHFCHLAWVNTPKKQGGLGPMNIPLVSDPKRTIAQDYGVLKADEGISFRGLFIIDDKGILR QITVNDLPVGRSVDETLRLVQAFQFTDKHGEVCPAGWKPGSDTIKPDVQKSKEYFSKQK TRTRPLEQKLISEEDLAANDILDYKDDDDKV
Tag:	C-Myc/DDK
Purity:	> 80% as determined by SDS-PAGE and Coomassie blue staining
Concentration:	>0.05 µg/µL as determined by microplate BCA method
Labeling Method:	Labeled with [U- ¹³ C ₆ , ¹⁵ N ₄]-L-Arginine and [U- ¹³ C ₆ , ¹⁵ N ₂]-L-Lysine
Buffer:	25 mM Tris-HCl, 100 mM glycine, pH 7.3
Storage:	Store at -80°C. Avoid repeated freeze-thaw cycles.
Stability:	Stable for 3 months from receipt of products under proper storage and handling conditions.
RefSeq:	NP_002565
RefSeq Size:	1263
RefSeq ORF:	597
Synonyms:	MSP23; NKEF-A; NKEFA; PAG; PAGA; PAGB; PRX1; PRXI; TDPX2
Locus ID:	5052
UniProt ID:	Q06830 , A0A384NPQ2

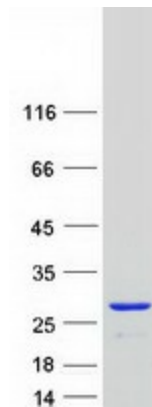


[View online »](#)

Cytogenetics: 1p34.1

Summary: This gene encodes a member of the peroxiredoxin family of antioxidant enzymes, which reduce hydrogen peroxide and alkyl hydroperoxides. The encoded protein may play an antioxidant protective role in cells, and may contribute to the antiviral activity of CD8(+) T-cells. This protein may have a proliferative effect and play a role in cancer development or progression. Four transcript variants encoding the same protein have been identified for this gene. [provided by RefSeq, Jan 2011]

Product images:



Coomassie blue staining of purified PRDX1 protein (Cat# [TP321235]). The protein was produced from HEK293T cells transfected with PRDX1 cDNA clone (Cat# [RC221235]) using MegaTran 2.0 (Cat# [TT210002]).