

Product datasheet for PH321229

CCT3 (NM_005998) Human Mass Spec Standard

Product data:

Product Type:	Mass Spec Standards
Description:	CCT3 MS Standard C13 and N15-labeled recombinant protein (NP_005989)
Species:	Human
Expression Host:	HEK293
Expression cDNA Clone or AA Sequence:	RC221229
Predicted MW:	60.4 kDa
Protein Sequence:	>RC221229 representing NM_005998 Red=Cloning site Green=Tags(s)

MMGHRPVLVLSQNTKRESGRKVVQSGNINAAKTIADIIRTCLGPKSMMKMLLDPMGGIVMTNDGNAILREI
QVQHAAKSMIEISRTQDEEVGDGTTSVIILAGEMLSVAEHFLEQQMHPTVVISAYRKALDDMISTLKKI
SIPVDISDSDMMLNIINSSITTKAISRWSSLACNIALDAVKMVQFEENGRKEIDIKKYARVEKIPGGIIE
DSCVLRGVMINKDVTHPRMRYIKNPRIVLLDSSLEYKKGESQTDIEITREEDFTRILQMEEYIQLLCE
DIIQLKPDVVITEKGISDLAQHYLMRANITAIRRVKTDNNRIARACGARIVSRPEELREDDVGTGAGLL
EIKKIGDEYFTFIDCKDPKACTILLRGASKEILSEVERNLDAMQVCRNVLLDPQLVPGGGASEMAVAH
ALTEKSKAMTGVEQWPYRAVAQALEVIPRTLIQNCGASTIRLLTSLRAKHTQENCETWGVNGETGLVDM
KELGIWEPLAVKLQTYKTAVETAVLLLRIDDIVSGHKKKGDDQSRQGGAPDAGQE

TRTRPLEQKLISEEDLAANDILDYKDDDDKV

Tag:	C-Myc/DDK
Purity:	> 80% as determined by SDS-PAGE and Coomassie blue staining
Concentration:	>0.05 µg/µL as determined by microplate BCA method
Labeling Method:	Labeled with [U- ¹³ C ₆ , ¹⁵ N ₄]-L-Arginine and [U- ¹³ C ₆ , ¹⁵ N ₂]-L-Lysine
Buffer:	25 mM Tris-HCl, 100 mM glycine, pH 7.3
Storage:	Store at -80°C. Avoid repeated freeze-thaw cycles.
Stability:	Stable for 3 months from receipt of products under proper storage and handling conditions.
RefSeq:	NP_005989
RefSeq Size:	2096
RefSeq ORF:	1635



[View online »](#)

Synonyms: CCT-gamma; CCTG; PIG48; TCP-1-gamma; TRIC5

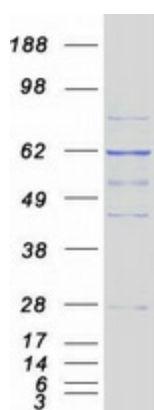
Locus ID: 7203

UniProt ID: [P49368](#), [B3KX11](#), [Q59H77](#)

Cytogenetics: 1q22

Summary: The protein encoded by this gene is a molecular chaperone that is a member of the chaperonin containing TCP1 complex (CCT), also known as the TCP1 ring complex (TRiC). This complex consists of two identical stacked rings, each containing eight different proteins. Unfolded polypeptides enter the central cavity of the complex and are folded in an ATP-dependent manner. The complex folds various proteins, including actin and tubulin. Alternate transcriptional splice variants have been characterized for this gene. In addition, a pseudogene of this gene has been found on chromosome 8. [provided by RefSeq, Aug 2010]

Product images:



Coomassie blue staining of purified CCT3 protein (Cat# [TP321229]). The protein was produced from HEK293T cells transfected with CCT3 cDNA clone (Cat# [RC221229]) using MegaTran 2.0 (Cat# [TT210002]).