

Product datasheet for PH321225

LIPF (NM_004190) Human Mass Spec Standard

Product data:

Product Type:	Mass Spec Standards
Description:	LIPF MS Standard C13 and N15-labeled recombinant protein (NP_004181)
Species:	Human
Expression Host:	HEK293
Expression cDNA Clone or AA Sequence:	RC221225
Predicted MW:	45.24 kDa
Protein Sequence:	>RC221225 representing NM_004190 Red=Cloning site Green=Tags(s)
	MWLLLTMASLISVLGTTHGLFGKLHPGSPEVTMNISQMITYWGYPNEEYEVVTEDEGYILEVNRIPYGKKN SGTGTGQRPVVFLQHGLLASATNWI SNLPNNSLAFILADAGYDVWLGNSRGNTWARRNLYYSPDSVEFWAF SFDEMAKYDLPATIDFIVKKTGQQLHYVGHSGQTITIGFIAFSTNPSLAKRIKTFYALAPVATVKYTKSL INKLRFVPSLKFIFGDKIFYPHNFFDQFLATEVCSREMLNLLCSNALFIIICGFDSKNFNTSRLDVYLS HNPAGTSVQNMFWHTQAVKSGKFQAYDWGSPVQNRMHYDQSQPPYYNVTAMNVP IAVWNGGKDLLADPQD VGLLLPKLPNLIYHKEIPFYNHLDFIWAMDAPQEVYNDIVSMISEDKK
	TRTRPLEQKLI SEEDLAANDILDYKDDDDKV
Tag:	C-Myc/DDK
Purity:	> 80% as determined by SDS-PAGE and Coomassie blue staining
Concentration:	>0.05 µg/µL as determined by microplate BCA method
Labeling Method:	Labeled with [U- ¹³ C ₆ , ¹⁵ N ₄]-L-Arginine and [U- ¹³ C ₆ , ¹⁵ N ₂]-L-Lysine
Buffer:	25 mM Tris-HCl, 100 mM glycine, pH 7.3
Storage:	Store at -80°C. Avoid repeated freeze-thaw cycles.
Stability:	Stable for 3 months from receipt of products under proper storage and handling conditions.
RefSeq:	<u>NP_004181</u>
RefSeq Size:	1365
RefSeq ORF:	1194
Synonyms:	GL; HGL; HLAL
Locus ID:	8513



[View online »](#)

UniProt ID: [P07098](#)

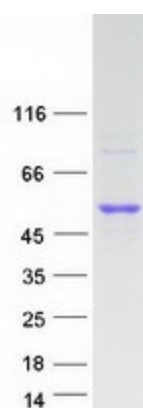
Cytogenetics: 10q23.31

Summary: This gene encodes gastric lipase, an enzyme involved in the digestion of dietary triglycerides in the gastrointestinal tract, and responsible for 30% of fat digestion processes occurring in human. It is secreted by gastric chief cells in the fundic mucosa of the stomach, and it hydrolyzes the ester bonds of triglycerides under acidic pH conditions. The gene is a member of a conserved gene family of lipases that play distinct roles in neutral lipid metabolism. Several transcript variants encoding different isoforms have been found for this gene. [provided by RefSeq, Nov 2010]

Protein Families: Druggable Genome, Secreted Protein

Protein Pathways: Glycerolipid metabolism, Metabolic pathways

Product images:



Coomassie blue staining of purified LIPF protein (Cat# [TP321225]). The protein was produced from HEK293T cells transfected with LIPF cDNA clone (Cat# [RC221225]) using MegaTran 2.0 (Cat# [TT210002]).