

Product datasheet for PH321216

LAMP2 (NM_002294) Human Mass Spec Standard

Product data:

Product Type:	Mass Spec Standards
Description:	LAMP2 MS Standard C13 and N15-labeled recombinant protein (NP_002285)
Species:	Human
Expression Host:	HEK293
Expression cDNA Clone or AA Sequence:	RC221216
Predicted MW:	44.96 kDa
Protein Sequence:	>RC221216 representing NM_002294 Red =Cloning site Green =Tags(s)

MVCFRLFPVPGSGLVLVCLVLGAVRSYALELNLTDSENATCLYAKWQMNFTVRYETTNNKYKTVTISDHG
 TVTYNGSICGDDQNGPKIAVQFGPGFSWIANFTKAASTYSIDSVFSYNTGDNTTFPDAEDKGILTYDEL
 LAIRIPLNDLFRCSLSTLEKNDVVQHYWDVLVQAFVQNGTVSTNEFLCDKDKTSTVAPTIIHTTVPSPTT
 TPTPKPEAGTYSVNNNGNDTCLLATMGLQLNITQDKVASVININPNTTHSTGSCRSHTALLRLNSSTIK
 YLDFVFAVKNENRFYLKEVNISMVYLVNGSVFSIANNLSYWDAPLGSSYMCNKEQTVSVSGAFQINTFDL
 RVQPFNVTQGKYSTAQDCSADDNFLVPIAVGAALAGVLILVLLAYFVIGLKHHHAGYEQF

TRTRPLEQKLISEEDLAANDILDYKDDDDKV

Tag:	C-Myc/DDK
Purity:	> 80% as determined by SDS-PAGE and Coomassie blue staining
Concentration:	>0.05 µg/µL as determined by microplate BCA method
Labeling Method:	Labeled with [U- ¹³ C ₆ , ¹⁵ N ₄]-L-Arginine and [U- ¹³ C ₆ , ¹⁵ N ₂]-L-Lysine
Buffer:	25 mM Tris-HCl, 100 mM glycine, pH 7.3
Storage:	Store at -80°C. Avoid repeated freeze-thaw cycles.
Stability:	Stable for 3 months from receipt of products under proper storage and handling conditions.
RefSeq:	<u>NP_002285</u>
RefSeq Size:	1868
RefSeq ORF:	1230
Synonyms:	CD107b; DND; LAMP-2; LAMPB; LGP-96; LGP110
Locus ID:	3920


[View online »](#)

UniProt ID: P13473

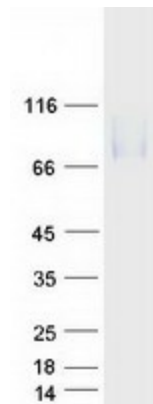
Cytogenetics: Xq24

Summary: The protein encoded by this gene is a member of a family of membrane glycoproteins. This glycoprotein provides selectins with carbohydrate ligands. It may play a role in tumor cell metastasis. It may also function in the protection, maintenance, and adhesion of the lysosome. Alternative splicing of this gene results in multiple transcript variants encoding distinct proteins. [provided by RefSeq, Jul 2008]

Protein Families: Druggable Genome, ES Cell Differentiation/IPS, Transmembrane

Protein Pathways: Lysosome

Product images:



Coomassie blue staining of purified LAMP2 protein (Cat# [TP321216]). The protein was produced from HEK293T cells transfected with LAMP2 cDNA clone (Cat# [RC221216]) using MegaTran 2.0 (Cat# [TT210002]).