

Product datasheet for PH321214

alpha Lactalbumin (LALBA) (NM_002289) Human Mass Spec Standard

Product data:

Product Type:	Mass Spec Standards
Description:	LALBA MS Standard C13 and N15-labeled recombinant protein (NP_002280)
Species:	Human
Expression Host:	HEK293
Expression cDNA Clone or AA Sequence:	RC221214
Predicted MW:	16.22 kDa
Protein Sequence:	>RC221214 representing NM_002289 Red=Cloning site Green=Tags(s) MRFFVPLFLVGILFPAILAKQFTKCELSQLLKDIDGYGGIALPELICTMFHTSGYDTQAIVENNESTEYGLFQISNKLWCKSSQVPQSRNICDISCDFLDDITDDIMCAKKILDIKGIDYWLAKALCTEKLEQWLCEKL TRTRPLEQKLISEEDLAANDILDYKDDDDKV
Tag:	C-Myc/DDK
Purity:	> 80% as determined by SDS-PAGE and Coomassie blue staining
Concentration:	>0.05 µg/µL as determined by microplate BCA method
Labeling Method:	Labeled with [U- 13C6, 15N4]-L-Arginine and [U- 13C6, 15N2]-L-Lysine
Buffer:	25 mM Tris-HCl, 100 mM glycine, pH 7.3
Storage:	Store at -80°C. Avoid repeated freeze-thaw cycles.
Stability:	Stable for 3 months from receipt of products under proper storage and handling conditions.
RefSeq:	<u>NP_002280</u>
RefSeq Size:	742
RefSeq ORF:	426
Synonyms:	LYZG
Locus ID:	3906
UniProt ID:	<u>P00709</u> , <u>A0A080YV01</u>



[View online »](#)

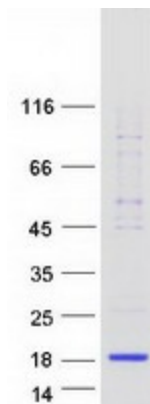
Cytogenetics: 12q13.11

Summary: This gene encodes alpha-lactalbumin, a principal protein of milk. Alpha-lactalbumin forms the regulatory subunit of the lactose synthase (LS) heterodimer and beta 1,4-galactosyltransferase (beta4Gal-T1) forms the catalytic component. Together, these proteins enable LS to produce lactose by transferring galactose moieties to glucose. As a monomer, alpha-lactalbumin strongly binds calcium and zinc ions and may possess bactericidal or antitumor activity. A folding variant of alpha-lactalbumin, called HAMLET, likely induces apoptosis in tumor and immature cells. [provided by RefSeq, Jul 2008]

Protein Families: Secreted Protein

Protein Pathways: Galactose metabolism

Product images:



Coomassie blue staining of purified LALBA protein (Cat# [TP321214]). The protein was produced from HEK293T cells transfected with LALBA cDNA clone (Cat# [RC221214]) using MegaTran 2.0 (Cat# [TT210002]).