

Product datasheet for PH321180

ARHGEF1 (NM_199002) Human Mass Spec Standard

Product data:

Product Type:	Mass Spec Standards
Description:	ARHGEF1 MS Standard C13 and N15-labeled recombinant protein (NP_945353)
Species:	Human
Expression Host:	HEK293
Expression cDNA Clone or AA Sequence:	RC221180
Predicted MW:	104.1 kDa
Protein Sequence:	>RC221180 protein sequence Red=Cloning site Green=Tags(s)

MASLSTWSSPAEPREMEDFARGAASPGPSRPGLVPVSIIGAEDDFENELETNSEEQNSQFQSLEQVKRR
PAHLMALLQHVALQFEPGPLLCLHADMLGSLGPKEAKKAFDFYHSFLEKTAVLRVPVPPNVAFELDRT
RADLISEDVQRRFVQEVVQSQQVAVGRQLEDFRSKRLMGMPWEQELAQLAWEVGRDRASYEARERHVAE
RLLMHLEEMQHTISTDEEKSAAVVNAIGLYMRHLGVRTKSGDKKSGRNFFRKKVMGNRRSDEPAKTKKGL
SSILDAARWNRGEPQVPDFRHLKAEVDAEKPATDRKGGVGMPSRDRNIGAPGQDTPGVSLHPLSLDSPD
REPGADAPLELGDSSPQGPMSLESLAPPESTDEGAETESPEPGDEGEPGRSGLELEPEPPGWRELVPPD
TLHSLPKSQVKRQEVISELLVTEAAHVRLRVLHDLFFQPMAECLFFPLEELQNIFFPSLDELIEVHSLFL
DRLMKRRQESGYLIEEIGDVLLARFDGAEGSWFQKISSRFCSRQSFALQLKAKQRKDRPFCAFVQEAES
RPRCRRQLKDMIPTEMQRLTKYPLLLQSIGQNTTEETEREKVELAAECCREILHHVNQAVRDMEDLLRL
KDYQRRDLSHLRQSSDPMLSEFNLDITKTKLVHEGPLTWRVTKDKAVEVHVLDDLLQLLQRQDERL
LLKSHSRTLTPTPDGKTLRPVLRRLTSAMTREVATDHKAFYVLFVTDQEAQIYELVAQTVSERKNWCALI
TETAGSLKVPAPASRPKPRPSPSTREPLLSSSENGNGGRETSPADARTERILSDLLPFCRPGPEGQLAA
TALRKVLSLKQLLFPAAEEDNAGPPRDGDGVPGGGPLSPARTQEIQENLLSLEETMKQLEEELEEFCLRL
PLLSQLGGNSVPQPGCT

TRTRPLEQKLISEEDLAANDILDYKDDDDKV

Tag:	C-Myc/DDK
Purity:	> 80% as determined by SDS-PAGE and Coomassie blue staining
Concentration:	>0.05 µg/µL as determined by microplate BCA method
Labeling Method:	Labeled with [U- ¹³ C ₆ , ¹⁵ N ₄]-L-Arginine and [U- ¹³ C ₆ , ¹⁵ N ₂]-L-Lysine
Buffer:	25 mM Tris-HCl, 100 mM glycine, pH 7.3
Storage:	Store at -80°C. Avoid repeated freeze-thaw cycles.
Stability:	Stable for 3 months from receipt of products under proper storage and handling conditions.



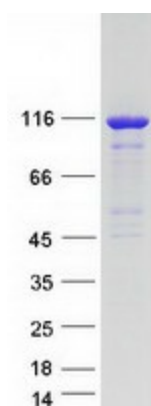
[View online »](#)

RefSeq:	NP_945353
RefSeq Size:	3261
RefSeq ORF:	2781
Synonyms:	GEF1; IMD62; LBCL2; LSC; P115-RHOGEF; SUB1.5
Locus ID:	9138
UniProt ID:	Q92888
Cytogenetics:	19q13.2

Summary: Rho GTPases play a fundamental role in numerous cellular processes that are initiated by extracellular stimuli that work through G protein coupled receptors. The encoded protein may form complex with G proteins and stimulate Rho-dependent signals. Multiple alternatively spliced transcript variants have been found for this gene, but the full-length nature of some variants has not been defined. [provided by RefSeq, Jul 2008]

Protein Pathways: Regulation of actin cytoskeleton, Vascular smooth muscle contraction

Product images:



Coomassie blue staining of purified ARHGEF1 protein (Cat# [TP321180]). The protein was produced from HEK293T cells transfected with ARHGEF1 cDNA clone (Cat# [RC221180]) using MegaTran 2.0 (Cat# [TT210002]).