

Product datasheet for PH321178

HKDC1 (NM_025130) Human Mass Spec Standard

Product data:

Product Type:	Mass Spec Standards
Description:	HKDC1 MS Standard C13 and N15-labeled recombinant protein (NP_079406)
Species:	Human
Expression Host:	HEK293
Expression cDNA Clone or AA Sequence:	RC221178
Predicted MW:	102.5 kDa
Protein Sequence:	>RC221178 protein sequence Red=Cloning site Green=Tags(s)

MF AVHLM AFYF SKLKEDQIKKVD RFLYHMRLSDDTLDDIMRRFRAEMEKGLAKDNTPTAAVKMLPTFVRA
IPDGS ENGEFLSLDLGGSKFRVLKVQVAEEGKRHVQMESQFYPTPNEIIRNGTELFEYVADCLADFMKT
KDLKHKKLP LGLTFSFPCRQTKLEEGVLLSWTKKFKARGVQD TDVVSRLTKAMRRHKDMDVDILALVNDT
VGTMMTCAYDDPYCEVGVII GTGTNACYMEDMSNIDLVEGDEGRMCINTEWGAFGDDGALEDIRTEFDRE
LDLGS LNPGKQLFEKMISGLYL GELVRLILLKMAKAGLLFGGEKSSALHTKGGIETR HVAAMEKYKEGLA
NTREILVDLGLEPSEADCI AVQH VCTIVSFRSANLCAAALAILTRLRENK KVERLRTTVGMDGTYKIH
POYPKRLHKVVRKLVPSCDVRFLLSESGSTKGAAMVTAVASRVQAQRKQIDRVLALFQLTREQLVDVQAK
MRAELEYGLKKKSHGLATVRMLPTYVCGLPDGTEKGFALDLGGTNFRVLLVKIRSGRRSVRMYNKIFA
IPLEIMQGTGEELFDHIVQCIADFLDYMGLKGASLPLGFTFSFPCRQMSIDKGTLIGWTKGFKATDCEGE
DVVDMLREAIKRRNEFDLDIVAVVNDTVGTMTCGYEDPNCEIGLIAGTGSNMCYMEDMRNIEMVEGEG
KMCINTEWGGFGDNGCIDDIRTRYDTEVDEGSLNPGKQRYEKMTSGMYLGEIVRQILIDLTKQGLLFRGQ
ISERLRTRGIFETKFLSQIESDRLALLQVRRILQQLGLDSTCEDSI VVKEVCGAVSRRAAQLCGAGLAAI
VEKRREDQGLEHLRITVGV DGTLYKLHPHF SRILQETVKELAPRCDVTFMLSE DGSKGGAALITAVAKRL
QQAQKEN

TRTRPLEQKLI SEEDLAANDILDYKDDDDKV

Tag:	C-Myc/DDK
Purity:	> 80% as determined by SDS-PAGE and Coomassie blue staining
Concentration:	>0.05 µg/µL as determined by microplate BCA method
Labeling Method:	Labeled with [U- ¹³ C ₆ , ¹⁵ N ₄]-L-Arginine and [U- ¹³ C ₆ , ¹⁵ N ₂]-L-Lysine
Buffer:	25 mM Tris-HCl, 100 mM glycine, pH 7.3
Storage:	Store at -80°C. Avoid repeated freeze-thaw cycles.
Stability:	Stable for 3 months from receipt of products under proper storage and handling conditions.



[View online >](#)

RefSeq: [NP_079406](#)

RefSeq Size: 3719

RefSeq ORF: 2751

Locus ID: 80201

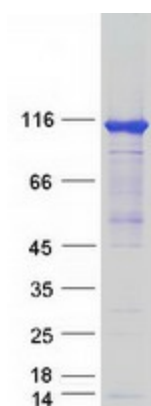
UniProt ID: [Q2TB90](#), [B3KT70](#)

Cytogenetics: 10q22.1

Summary: This gene encodes a member of the hexokinase protein family. The encoded protein is involved in glucose metabolism, and reduced expression may be associated with gestational diabetes mellitus. High expression of this gene may also be associated with poor prognosis in hepatocarcinoma. [provided by RefSeq, Sep 2016]

Protein Families: Druggable Genome

Product images:



Coomassie blue staining of purified HKDC1 protein (Cat# [TP321178]). The protein was produced from HEK293T cells transfected with HKDC1 cDNA clone (Cat# [RC221178]) using MegaTran 2.0 (Cat# [TT210002]).