

## Product datasheet for PH321162

### Dystrobrevin alpha (DTNA) (NM\_001390) Human Mass Spec Standard

#### Product data:

Product Type:	Mass Spec Standards
Description:	DTNA MS Standard C13 and N15-labeled recombinant protein (NP_001381)
Species:	Human
Expression Host:	HEK293
Expression cDNA Clone or AA Sequence:	RC221162
Predicted MW:	83.9 kDa
Protein Sequence:	>RC221162 representing NM_001390 Red=Cloning site Green=Tags(s)

MIEDSGKRGNTMAERRQLFAEMRAQDLDRIRLSTYRTACKLRFVQKCCNLHLVDIWNVIEALRENALNNL  
DPNTELNVSRLAVALSTIFYQLNKRMPPTHQIHVEQSI SLLLNFLLAAFDPEGHGKISVFAVKMALATLC  
GGKIMDKLRYIFSMISDSSGVMVYGRYDQFLREVLKLP TAVFEGPSFGYTEQSARSCFSQKQKVTNLNGFL  
DTLMSDPPPQCLVWLPLLHRLANVENVFHPVECSYCHSESMGFRYRCQQCHNYQLCQDCFWRGHAGGSH  
SNQHQMKYEYSWKSPAKKLTNALSKSLSCASSREPLHPMFPDQPEKPLNLAHIVDTWPPRPVTSMNDFL  
SHSVPSSGSPFITRSPPKDSEVEQNKLLARAAPAF LKGGKIQYSLNVADRLADEHVLIGLYVNMLRNNP  
SCMLESSNRLDEEHRLIARYAARLAAESSSSQPPQORSAPDISFTIDANKQQRQLIAELENKNREILQEI  
QRLRLEHEQASQPTPEKAQONPTLLAELRLLRQRKDELEQRMSALQESRRELMVQLEGLMKLLKTQGAGS  
PRSSPSHTISRPIMPPIRSASACSTPHTPQDSL TGVGGDVQEAFAQSSRRNLRNDLLVAADSITNTMSS  
LVKELNSEVGSETESNVDFEFARTQFEDLVPSPTSEKAF LAQIHARKPGYIHSGATTSTMRGDMVTEAD  
PYVQPEDENYENDSVRQLENELQMEEY LKQKLQDEAYQVSLQG

TRTRPLEQKLI SEEDLAANDILDYKDDDDKV

Tag:	C-Myc/DDK
Purity:	> 80% as determined by SDS-PAGE and Coomassie blue staining
Concentration:	>0.05 µg/µL as determined by microplate BCA method
Labeling Method:	Labeled with [U- 13C6, 15N4]-L-Arginine and [U- 13C6, 15N2]-L-Lysine
Buffer:	25 mM Tris-HCl, 100 mM glycine, pH 7.3
Storage:	Store at -80°C. Avoid repeated freeze-thaw cycles.
Stability:	Stable for 3 months from receipt of products under proper storage and handling conditions.
RefSeq:	<u>NP_001381</u>



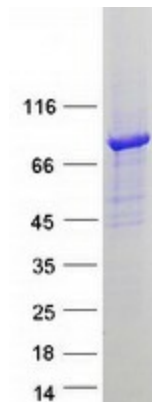
[View online »](#)

RefSeq Size:	6358
RefSeq ORF:	2229
Synonyms:	D18S892E; DRP3; DTN; DTN-A; LVNC1
Locus ID:	1837
UniProt ID:	<a href="#">Q9Y4J8</a>
Cytogenetics:	18q12.1

**Summary:** The protein encoded by this gene belongs to the dystrobrevin subfamily of the dystrophin family. This protein is a component of the dystrophin-associated protein complex (DPC), which consists of dystrophin and several integral and peripheral membrane proteins, including dystroglycans, sarcoglycans, syntrophins and alpha- and beta-dystrobrevin. The DPC localizes to the sarcolemma and its disruption is associated with various forms of muscular dystrophy. Mutations in this gene are associated with left ventricular noncompaction with congenital heart defects. Multiple alternatively spliced transcript variants encoding different isoforms have been identified for this gene. [provided by RefSeq, Jul 2008]

**Protein Families:** Druggable Genome

### Product images:



Coomassie blue staining of purified DTNA protein (Cat# [TP321162]). The protein was produced from HEK293T cells transfected with DTNA cDNA clone (Cat# [RC221162]) using MegaTran 2.0 (Cat# [TT210002]).