

Product datasheet for PH321161

PQBP1 (NM_001032384) Human Mass Spec Standard

Product data:

Product Type:	Mass Spec Standards
Description:	PQBP1 MS Standard C13 and N15-labeled recombinant protein (NP_001027556)
Species:	Human
Expression Host:	HEK293
Expression cDNA Clone or AA Sequence:	RC221161
Predicted MW:	30.5 kDa
Protein Sequence:	>RC221161 protein sequence Red=Cloning site Green=Tags(s) MPLPVALQTRLAKRGILKHLEPEPEEEIIAEDYDDDPVDYEATRLEGLPPSWYKVFDPSCGLPPYYWNADT DLVSWLSPHDPNSVVTSAKCLRSSNADAEKLDKSHDKSDRGHDKSDRSHEKLDRGHDKSDRGHDKSDR DRERGYDKVDRERERDRERDRDRGYDKADREEGKERRHRRREELAPYPKSKKAVSRKDEELDPMDPSSYS DAPRGTWSTGLPKRNEAKTGADTTAAGPLFQQRYPYSPGAVLRANAEASRTKQQD TRTRPLEQKLI SEEDLAANDILDYKDDDDKV
Tag:	C-Myc/DDK
Purity:	> 80% as determined by SDS-PAGE and Coomassie blue staining
Concentration:	>0.05 µg/µL as determined by microplate BCA method
Labeling Method:	Labeled with [U- ¹³ C ₆ , ¹⁵ N ₄]-L-Arginine and [U- ¹³ C ₆ , ¹⁵ N ₂]-L-Lysine
Buffer:	25 mM Tris-HCl, 100 mM glycine, pH 7.3
Storage:	Store at -80°C. Avoid repeated freeze-thaw cycles.
Stability:	Stable for 3 months from receipt of products under proper storage and handling conditions.
RefSeq:	NP_001027556
RefSeq Size:	1002
RefSeq ORF:	795
Synonyms:	MRX2; MRX55; MRXS3; MRXS8; NPW38; RENS1; SHS
Locus ID:	10084
UniProt ID:	O60828 , A0A0S2Z4V5



[View online »](#)

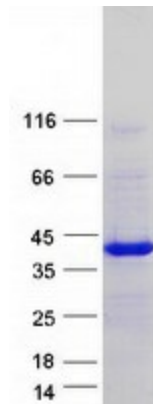
Cytogenetics: Xp11.23

Summary: This gene encodes a nuclear polyglutamine-binding protein that is involved with transcription activation. The encoded protein contains a WW domain. Mutations in this gene have been found in patients with Renpenning syndrome 1 and other syndromes with X-linked cognitive disability. Multiple alternatively spliced transcript variants that encode different protein isoforms have been described for this gene.[provided by RefSeq, Nov 2009]

Protein Families: Transcription Factors

Protein Pathways: Spliceosome

Product images:



Coomassie blue staining of purified PQBP1 protein (Cat# [TP321161]). The protein was produced from HEK293T cells transfected with PQBP1 cDNA clone (Cat# [RC221161]) using MegaTran 2.0 (Cat# [TT210002]).