

Product datasheet for PH321153

CD62E (SELE) (NM_000450) Human Mass Spec Standard

Product data:

Product Type:	Mass Spec Standards
Description:	SELE MS Standard C13 and N15-labeled recombinant protein (NP_000441)
Species:	Human
Expression Host:	HEK293
Expression cDNA Clone or AA Sequence:	RC221153
Predicted MW:	66.66 kDa
Protein Sequence:	>RC221153 representing NM_000450 Red=Cloning site Green=Tags(s)

MIASQFLSALTLLVLLIKESGAWSYNTSTEAMTYDEASAYCQQRVYTHLVAIQNKEEIEYLNSILSYSPSY
WIGIRKVNNVWVWGTQKPLTEEAKNWAPGEPNNRQKDEDCVEIYIKREKDVGMWNDERCSKKLALCYT
AACTNTSCSGHGECVETINNYTCKCDPGFSGLKCEQIVNCTALESPEHGSLVCSHPLGNFSYNSSCSISC
DRGYLPSSMETMQCMSSGEWSAPIACNVVECDVTPANGFVECFQNPGSFPWNTTCTFDCEEGLMGMG
AQSLQCTSSGNWDNEKPTCKAVTCRAVRQPQNGSVRCSHSPAGEFTFKSSCNFTCEEGLMGGPAQVQECT
TQGQWTQQIPVCEAFQCTALSNPERGYMNCLPSASGSFRYSSCEFSCEQGFVLKSKRLQCGPTGEWDN
EKPTCEAVRCDVHQPCKGLVRAHSPIGFTYKSSCAFSCSEGFELHGSTQLECTSQGQWTEEVPSQCV
VKCSSLAVPGKINMSCSGEPVFGTVCKFACPEGWTLNGSAARTCGATGHWSGLLPTCEAPTESNIPLVAG
LSAAGLSLLTLAPFLLWLRKCLRKAKKFPASSCQSLESDGSYQKPSYIL

TRTRPLEQKLISEEDLAANDILDYKDDDDKV

Tag:	C-Myc/DDK
Purity:	> 80% as determined by SDS-PAGE and Coomassie blue staining
Concentration:	>0.05 µg/µL as determined by microplate BCA method
Labeling Method:	Labeled with [U- 13C6, 15N4]-L-Arginine and [U- 13C6, 15N2]-L-Lysine
Buffer:	25 mM Tris-HCl, 100 mM glycine, pH 7.3
Storage:	Store at -80°C. Avoid repeated freeze-thaw cycles.
Stability:	Stable for 3 months from receipt of products under proper storage and handling conditions.
RefSeq:	NP_000441
RefSeq Size:	3834
RefSeq ORF:	1830



[View online »](#)

Synonyms: CD62E; ELAM; ELAM1; ESEL; LECAM2

Locus ID: 6401

UniProt ID: [P16581](#)

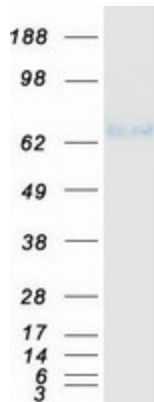
Cytogenetics: 1q24.2

Summary: The protein encoded by this gene is found in cytokine-stimulated endothelial cells and is thought to be responsible for the accumulation of blood leukocytes at sites of inflammation by mediating the adhesion of cells to the vascular lining. It exhibits structural features such as the presence of lectin- and EGF-like domains followed by short consensus repeat (SCR) domains that contain 6 conserved cysteine residues. These proteins are part of the selectin family of cell adhesion molecules. Adhesion molecules participate in the interaction between leukocytes and the endothelium and appear to be involved in the pathogenesis of atherosclerosis. [provided by RefSeq, Jul 2008]

Protein Families: Druggable Genome, Transmembrane

Protein Pathways: Cell adhesion molecules (CAMs)

Product images:



Coomassie blue staining of purified SELE protein (Cat# [TP321153]). The protein was produced from HEK293T cells transfected with SELE cDNA clone (Cat# [RC221153]) using MegaTran 2.0 (Cat# [TT210002]).