

## Product datasheet for PH321145

### OTOA (NM\_144672) Human Mass Spec Standard

#### Product data:

Product Type:	Mass Spec Standards
Description:	OTOA MS Standard C13 and N15-labeled recombinant protein (NP_653273)
Species:	Human
Expression Host:	HEK293
Expression cDNA Clone or AA Sequence:	RC221145
Predicted MW:	126.8 kDa
Protein Sequence:	>RC221145 protein sequence Red=Cloning site Green=Tags(s)

MSQEPTTYSFLFLFLSHGVSSYTPNSRQDLHPLLQNMAEEIIDGSYLNALLDLIQFQSSHVWTDLSDH  
RVLAYLNSRNVAFITIPSLQAAVENHLEQRLHQPKLLEDLRKTDAAQFRTAMKCLLEDKDGDLKDI  
DLGEIRERALQSPGVNRSFLITLERCFQMLNSLECVEILGKVLRGSSGSFLQPDITERLPRDLREDAFK  
NLSAVFKDLYDKTSAHSQRALYSWMTGILQTSSNATDDASWVSAEHLWVLRGVMVHLSFEEITKISPIE  
IGLFISYDNATKQLDMVYDITPELAQAFLEIRISSNFNMRNTSTIHRGLLVCFYNDLELLDATVAQVLL  
YQMIKCSHLRGFQAGVQKLKAELLDIAMENQTLNETLGSLSDAVVGLTYSQLESLSPEAVHGAISTLNQV  
SGWAKSQVILSAKYLAHEKVSFYNVSQMGALLAGVSTQAFCSMKRKDISQVLRSAVSQYVSDLSPAQQ  
QGILSKMVQAEDTAPGIVEIQGAFFKEVSLFDLRRQPGFNSTVLKDKELGRSQALFLYELLLKTRRPEE  
LLSAGQLVKGVTCSHIDAMSTDFLAHFQDFQNNFALLSPYQVNCLAWKYWEVSRLSMPFLLAALPARY  
LASVPAQCVPFLISLGKSWLDSLVLDSHKKTSVLRKVQQLDDSIADYTVDIMGNLLCHLPAATIDRG  
ISPRAWATALHGLRDCPDLNPEQKAARLKLGGYGLPQHWAETTKDLGPFLVLFSGDELSSIATKFPE  
ILLQAASKMARTLPTKEFLWAVFQSVNRSSDKIPSYDPMGCHGVVAPSSDDIFKLAEANACWALEDLRC  
MEEDTFIRTVELLGAQQFSRQMLTLKEKAIQVWDMPSYWREHIVSLGRIALALNESELEQLDSSID  
TVASLSWQTEWTPGQAESILQGYLDDSGYSIQDLKSFHLVGLGATLCAINITEIPLIKISEFRVVVARIG  
TLLCSTHVLAEFKRKAQVVFQDPTEWTSVQLQELGTIAAGLTKAALRMLDKDLMPYFQPSAIKCLPDEIF  
KELSAEQIASLGPENAAAVTHAQRRLSPLQLQSLQQALDQAKTHSWQDAPASAGPTRTSSSRSPAGALQ  
SWGLWLGCPLLVLMAKLLW

TRTRPLEQKLISEEDLAANDILDYKDDDDKV

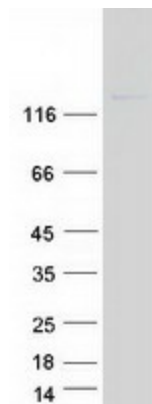
Tag:	C-Myc/DDK
Purity:	> 80% as determined by SDS-PAGE and Coomassie blue staining
Concentration:	>0.05 µg/µL as determined by microplate BCA method
Labeling Method:	Labeled with [U- <sup>13</sup> C <sub>6</sub> , <sup>15</sup> N <sub>4</sub> ]-L-Arginine and [U- <sup>13</sup> C <sub>6</sub> , <sup>15</sup> N <sub>2</sub> ]-L-Lysine
Buffer:	25 mM Tris-HCl, 100 mM glycine, pH 7.3



[View online »](#)

<b>Storage:</b>	Store at -80°C. Avoid repeated freeze-thaw cycles.
<b>Stability:</b>	Stable for 3 months from receipt of products under proper storage and handling conditions.
<b>RefSeq:</b>	<a href="#">NP_653273</a>
<b>RefSeq Size:</b>	3624
<b>RefSeq ORF:</b>	3417
<b>Synonyms:</b>	CT108; DFNB22
<b>Locus ID:</b>	146183
<b>UniProt ID:</b>	<a href="#">Q05BM7</a>
<b>Cytogenetics:</b>	16p12.2
<b>Summary:</b>	The protein encoded by this gene is specifically expressed in the inner ear, and is located at the interface between the apical surface of the inner ear sensory epithelia and their overlying acellular gels. It is proposed that this protein is involved in the attachment of the inner ear acellular gels to the apical surface of the underlying nonsensory cells. Mutations in this gene are associated with autosomal recessive deafness type 22 (DFNB22). Alternatively spliced transcript variants encoding different isoforms have been found for this gene. [provided by RefSeq, Sep 2009]

### Product images:



Coomassie blue staining of purified OTOA protein (Cat# [TP321145]). The protein was produced from HEK293T cells transfected with OTOA cDNA clone (Cat# [RC221145]) using MegaTran 2.0 (Cat# [TT210002]).