

Product datasheet for PH321130

UBE2W (NM_001001481) Human Mass Spec Standard

Product data:

Product Type:	Mass Spec Standards
Description:	UBE2W MS Standard C13 and N15-labeled recombinant protein (NP_001001481)
Species:	Human
Expression Host:	HEK293
Expression cDNA Clone or AA Sequence:	RC221130
Predicted MW:	18.5 kDa
Protein Sequence:	RC221130
Tag:	C-Myc/DDK
Purity:	> 80% as determined by SDS-PAGE and Coomassie blue staining
Concentration:	>0.05 µg/µL as determined by microplate BCA method
Labeling Method:	Labeled with [U- ¹³ C ₆ , ¹⁵ N ₄]-L-Arginine and [U- ¹³ C ₆ , ¹⁵ N ₂]-L-Lysine
Buffer:	25 mM Tris-HCl, 100 mM glycine, pH 7.3
Storage:	Store at -80°C. Avoid repeated freeze-thaw cycles.
Stability:	Stable for 3 months from receipt of products under proper storage and handling conditions.
RefSeq:	NP_001001481
RefSeq Size:	4057
RefSeq ORF:	486
Synonyms:	UBC-16; UBC16
Locus ID:	55284
UniProt ID:	Q96B02 , X6REH9
Cytogenetics:	8q21.11



[View online »](#)

Summary:

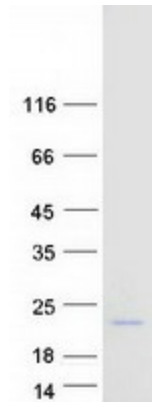
This gene encodes a nuclear-localized ubiquitin-conjugating enzyme (E2) that, along with ubiquitin-activating (E1) and ligating (E3) enzymes, coordinates the addition of a ubiquitin moiety to existing proteins. The encoded protein promotes the ubiquitination of Fanconi anemia complementation group proteins and may be important in the repair of DNA damage. There is a pseudogene for this gene on chromosome 1. Alternative splicing results in multiple transcript variants. [provided by RefSeq, Aug 2012]

Protein Families:

Transcription Factors

Protein Pathways:

Ubiquitin mediated proteolysis

Product images:

Coomassie blue staining of purified UBE2W protein (Cat# [TP321130]). The protein was produced from HEK293T cells transfected with UBE2W cDNA clone (Cat# [RC221130]) using MegaTran 2.0 (Cat# [TT210002]).