

Product datasheet for PH321105

ZDHHC15 (NM_144969) Human Mass Spec Standard

Product data:

Product Type:	Mass Spec Standards
Description:	ZDHHC15 MS Standard C13 and N15-labeled recombinant protein (NP_659406)
Species:	Human
Expression Host:	HEK293
Expression cDNA Clone or AA Sequence:	RC221105
Predicted MW:	39.2 kDa
Protein Sequence:	>RC221105 representing NM_144969 Red=Cloning site Green=Tags(s)

MRRGWKMALSGLRCCRRLSWVPVLVIVLVVLSYAYVFELCLVTVLSPA EKVIYLIYHAI FVFFTW
TYWKSIFTL PQQPNQKFHL SYTDKERYENEERPEVQKQMLVDM AKKLPVYTRTGSGAVR FCDRCHLIKPD
RCHHCSVCAMCVLKMDHHC PWVNNCIGFSNYKFFLQFLAYS VLYCLYIATTVFSYFIKYWRGELPSVRSK
FHVLFLLFVACMFFVSLVILFGYHCWLVSRNKTTLEAFCTPVFTSGPEKNGFN LGFIKNIQQVFGDKKKF
WLIPIGSSPGDGHSPMRSMNESQNPLLANEETWEDNEDDNDQDYPEGSSSLAVETET

TRTRPLEQKLI SEEDLAANDILDYKDDDDKV

Tag:	C-Myc/DDK
Purity:	> 80% as determined by SDS-PAGE and Coomassie blue staining
Concentration:	>0.05 µg/µL as determined by microplate BCA method
Labeling Method:	Labeled with [U- ¹³ C ₆ , ¹⁵ N ₄]-L-Arginine and [U- ¹³ C ₆ , ¹⁵ N ₂]-L-Lysine
Buffer:	25 mM Tris-HCl, 100 mM glycine, pH 7.3
Storage:	Store at -80°C. Avoid repeated freeze-thaw cycles.
Stability:	Stable for 3 months from receipt of products under proper storage and handling conditions.
RefSeq:	NP_659406
RefSeq Size:	1782
RefSeq ORF:	1011
Synonyms:	DHHC15; MRX91
Locus ID:	158866



[View online »](#)

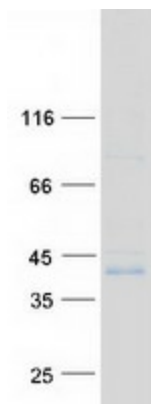
UniProt ID: [Q96MV8](#), [B3KY34](#)

Cytogenetics: Xq13.3

Summary: The protein encoded by this gene belongs to the DHHC palmitoyltransferase family. Mutations in this gene are associated with mental retardatio X-linked type 91 (MRX91). Alternatively spliced transcript variants encoding different isoforms have been found for this gene. [provided by RefSeq, Sep 2009]

Protein Families: Transmembrane

Product images:



Coomassie blue staining of purified ZDHHC15 protein (Cat# [TP321105]). The protein was produced from HEK293T cells transfected with ZDHHC15 cDNA clone (Cat# [RC221105]) using MegaTran 2.0 (Cat# [TT210002]).