

Product datasheet for PH321099

LIMCH1 (NM_014988) Human Mass Spec Standard

Product data:

Product Type:	Mass Spec Standards
Description:	LIMCH1 MS Standard C13 and N15-labeled recombinant protein (NP_055803)
Species:	Human
Expression Host:	HEK293
Expression cDNA Clone or AA Sequence:	RC221099
Predicted MW:	121.7 kDa
Protein Sequence:	>RC221099 representing NM_014988 Red=Cloning site Green=Tags(s)

MACPALGLEALQPLQPEPPPEPAFSEAQKWIEQVTGRSFGDKDFRTGLENGILLCELLNAIKPGLVKKIN
RLPTPIAGLDNIILFLRGCKELGLKESQLFDPSDLQDTSNRVTVKSLDYSRKLKNVLVTIYWLGAANSC
TSYSGTTLNLKEFEGLLAQMRKDTDDIESPKRSIRDSEYIDCWDSERSDSLSPPRHGRDSDSDFSGS
RSRQTPSPDVVLRGSSDGRGSDSESDLPHRKLDPVKKDDMSARRTSHGEPKSAVFPNQYLPNKSNTAYV
PAPLRKKKAEREEYRKSWSSTATSPLGGERPFRYPRTVPVSDAESTSMFDMRCEEEAAVQPHSRARQEQ
QLINNQLREEDDKWQDDLARWKSRRRSVSQDLIKKEEERKKMEKLLAGEDGTSERRKSIKTYREIVQEKE
RRERELHEAYKNARSQEEAEGILQQYIERFTISEAVLERLEMPKILERSHSTEPNLSSFNDPNPMKYLR
QQSLPPPFFTATVETTIARASVLDTSMSAGSGSPSKTVPKAVPMLTPKPYSPKNSQDVLKTFKVDGKV
SVNGETVHREEEKERECTVAPAHSLTKSQMFEGVARVHGSPLELQDNGSIEINIKKPNVPQELAATT
EKTEPNSQEDKNDGGKSRKGNIELASSEPHFTTTVTRCSPTVAFVEFPSSPQLKNDVSEEDQKKPENE
MSGKVELVLSQKVVPKSPPEATLTFPFLDKMPEANQLHLPNLNSQVDSPPSEKSPVTPQFKFWAWDP
EEERRRQEKWQQEQERLLQERYQKEQDKLKEWEKAQKEVEEEERRRYEEERKIIEDTVVPFTVSSSSAD
QLSTSSSMTEGSGTMNKIDLGNQDEKQDRRWKSFQGDSDLLLKTRESDRLEEKGSLTEGALAHSGNP
VSKGVHEDHQLDTEAGAPHCCTNPQLAQDPSQNPQTSNPTHSSSEDVKPKTLPLDKSINHQIESPERRKK
SPREHFQAGPFPSPCSPTPPGQSPNRSISGKCLCSCGLPLGKGAAMIETLNLVYFHIQCFRCGICKGQLG
DAVSGTDVIRINGLLNCNDCYMRSRAGQPTTL

TRTRPLEQKLISEEDLAANDILDYKDDDDKV

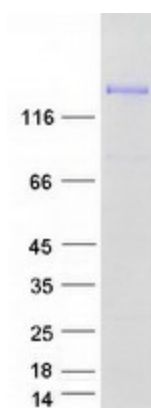
Tag:	C-Myc/DDK
Purity:	> 80% as determined by SDS-PAGE and Coomassie blue staining
Concentration:	>0.05 µg/µL as determined by microplate BCA method
Labeling Method:	Labeled with [U- ¹³ C ₆ , ¹⁵ N ₄]-L-Arginine and [U- ¹³ C ₆ , ¹⁵ N ₂]-L-Lysine
Buffer:	25 mM Tris-HCl, 100 mM glycine, pH 7.3



[View online »](#)

Storage:	Store at -80°C. Avoid repeated freeze-thaw cycles.
Stability:	Stable for 3 months from receipt of products under proper storage and handling conditions.
RefSeq:	NP_055803
RefSeq Size:	5113
RefSeq ORF:	3249
Synonyms:	LIMCH1A; LMO7B
Locus ID:	22998
UniProt ID:	Q9UPQ0
Cytogenetics:	4p13
Summary:	Actin stress fibers-associated protein that activates non-muscle myosin IIa. Activates the non-muscle myosin IIa complex by promoting the phosphorylation of its regulatory subunit MRLC/MYL9. Through the activation of non-muscle myosin IIa, positively regulates actin stress fibers assembly and stabilizes focal adhesions. It therefore negatively regulates cell spreading and cell migration.[UniProtKB/Swiss-Prot Function]

Product images:



Coomassie blue staining of purified LIMCH1 protein (Cat# [TP321099]). The protein was produced from HEK293T cells transfected with LIMCH1 cDNA clone (Cat# [RC221099]) using MegaTran 2.0 (Cat# [TT210002]).