

## Product datasheet for PH321022

### DKK3 (NM\_015881) Human Mass Spec Standard

#### Product data:

Product Type:	Mass Spec Standards
Description:	DKK3 MS Standard C13 and N15-labeled recombinant protein (NP_056965)
Species:	Human
Expression Host:	HEK293
Expression cDNA Clone or AA Sequence:	RC221022
Predicted MW:	38.3 kDa
Protein Sequence:	>RC221022 protein sequence Red=Cloning site Green=Tags(s)

MQRLGATLLCLLLAAAVPTAPAPAPTATSAPVKPGPALSYQEEATLNEMFREVEELMEDTQHKLRSAVE  
EMEAEEAAAKASSEVNLANLPPSYHNETNTDTKVGNNIIHVHREIHKITNNQTGQMVSETVITSVGDEE  
GRRSHECIIDEDCGPSMYCQFASFQYTCQPCRQQRMLCTRSECCGDQLCVWGHCTKMATRGSNGTICDN  
QRDCQPGLCCAFQRGLLFPVCTPLPVEGELCHDPASRLLDLITWELEPDGALDRCPASGLLCQPHSHSL  
VYVCKPTFVGSRDQDGEILLPREVPDEYEVGSFMEEVRQELEDLERSLTEEMALGEPAAAAAALLGGEEI

TRTRPLEQKLISEEDLAANDILDYKDDDDKV

Tag:	C-Myc/DDK
Purity:	> 80% as determined by SDS-PAGE and Coomassie blue staining
Concentration:	>0.05 µg/µL as determined by microplate BCA method
Labeling Method:	Labeled with [U- <sup>13</sup> C <sub>6</sub> , <sup>15</sup> N <sub>4</sub> ]-L-Arginine and [U- <sup>13</sup> C <sub>6</sub> , <sup>15</sup> N <sub>2</sub> ]-L-Lysine
Buffer:	25 mM Tris-HCl, 100 mM glycine, pH 7.3
Storage:	Store at -80°C. Avoid repeated freeze-thaw cycles.
Stability:	Stable for 3 months from receipt of products under proper storage and handling conditions.
RefSeq:	<a href="#">NP_056965</a>
RefSeq Size:	2769
RefSeq ORF:	1050
Synonyms:	REIC; RIG
Locus ID:	27122



[View online »](#)

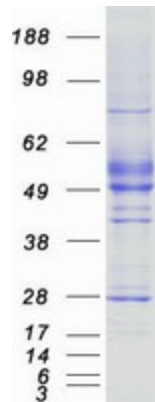
UniProt ID: [Q9UBP4](#)

Cytogenetics: 11p15.3

**Summary:** This gene encodes a protein that is a member of the dickkopf family. The secreted protein contains two cysteine rich regions and is involved in embryonic development through its interactions with the Wnt signaling pathway. The expression of this gene is decreased in a variety of cancer cell lines and it may function as a tumor suppressor gene. Alternative splicing results in multiple transcript variants encoding the same protein. [provided by RefSeq, Jul 2008]

**Protein Families:** Druggable Genome, Secreted Protein

### Product images:



Coomassie blue staining of purified DKK3 protein (Cat# [TP321022]). The protein was produced from HEK293T cells transfected with DKK3 cDNA clone (Cat# [RC221022]) using MegaTran 2.0 (Cat# [TT210002]).