

Product datasheet for PH320985

SLAMF7 (NM_021181) Human Mass Spec Standard

Product data:

Product Type:	Mass Spec Standards
Description:	SLAMF7 MS Standard C13 and N15-labeled recombinant protein (NP_067004)
Species:	Human
Expression Host:	HEK293
Expression cDNA Clone or AA Sequence:	RC220985
Predicted MW:	37.2 kDa
Protein Sequence:	>RC220985 representing NM_021181 Red=Cloning site Green=Tags(s)

MAGSPTCLTLIYILWQLTGSAAAGPVKELVGSVGGAVTFPLKSKVKQVDSIVWTFNTTPLVTIQPEGGTI
IVTQNRNRERVDFFDGGYSLKLSKLLKKNDSGIYYVGIYSSSLQQPSTQEYVLHVVEHLSPKPKVTMGLQSN
KNGTCVTNLTCCMEHGEEDVIYTWKALGQAANESHNGSILPISWRWGESDMTFICVARNPVSRNFSSPIL
ARKLCEGAADDPDSSMVLCLLLVPLLLSLFVLGLFLWFLKRERQEEYIEEKRVDICRETPNICPHSGE
NTEYDTIPHTNRTILKEDPANTVYSTVEIPKKMENPHSLLTMPDTPRLFAYENVI

TRTRPLEQKLISEEDLAANDILDYKDDDDKV

Tag:	C-Myc/DDK
Purity:	> 80% as determined by SDS-PAGE and Coomassie blue staining
Concentration:	>0.05 µg/µL as determined by microplate BCA method
Labeling Method:	Labeled with [U- ¹³ C ₆ , ¹⁵ N ₄]-L-Arginine and [U- ¹³ C ₆ , ¹⁵ N ₂]-L-Lysine
Buffer:	25 mM Tris-HCl, 100 mM glycine, pH 7.3
Storage:	Store at -80°C. Avoid repeated freeze-thaw cycles.
Stability:	Stable for 3 months from receipt of products under proper storage and handling conditions.
RefSeq:	<u>NP_067004</u>
RefSeq Size:	2672
RefSeq ORF:	1005
Synonyms:	19A; CD319; CRACC; CS1
Locus ID:	57823



[View online »](#)

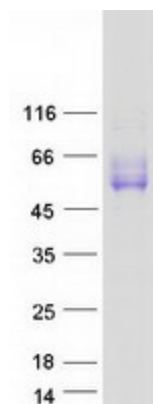
UniProt ID: [Q9NQ25](#)

Cytogenetics: 1q23.3

Summary: Self-ligand receptor of the signaling lymphocytic activation molecule (SLAM) family. SLAM receptors triggered by homo- or heterotypic cell-cell interactions are modulating the activation and differentiation of a wide variety of immune cells and thus are involved in the regulation and interconnection of both innate and adaptive immune response. Activities are controlled by presence or absence of small cytoplasmic adapter proteins, SH2D1A/SAP and/or SH2D1B/EAT-2. Isoform 1 mediates NK cell activation through a SH2D1A-independent extracellular signal-regulated ERK-mediated pathway (PubMed:11698418). Positively regulates NK cell functions by a mechanism dependent on phosphorylated SH2D1B. Downstream signaling implicates PLCG1, PLCG2 and PI3K (PubMed:16339536). In addition to heterotypic NK cells-target cells interactions also homotypic interactions between NK cells may contribute to activation. However, in the absence of SH2D1B, inhibits NK cell function. Acts also inhibitory in T-cells (By similarity). May play a role in lymphocyte adhesion (PubMed:11802771). In LPS-activated monocytes negatively regulates production of proinflammatory cytokines (PubMed:23695528).[UniProtKB/Swiss-Prot Function]

Protein Families: Druggable Genome, Transmembrane

Product images:



Coomassie blue staining of purified SLAMF7 protein (Cat# [TP320985]). The protein was produced from HEK293T cells transfected with SLAMF7 cDNA clone (Cat# [RC220985]) using MegaTran 2.0 (Cat# [TT210002]).