

Product datasheet for PH320961

BUB3 (NM_001007793) Human Mass Spec Standard

Product data:

Product Type:	Mass Spec Standards
Description:	BUB3 MS Standard C13 and N15-labeled recombinant protein (NP_001007794)
Species:	Human
Expression Host:	HEK293
Expression cDNA Clone or AA Sequence:	RC220961
Predicted MW:	37 kDa
Protein Sequence:	>Peptide sequence encoded by RC220961 Blue=ORF Red=Cloning site Green=Tag(s) <p>MTGSNEFKLNQPPEDGISSVKFSPNTSQFLLVSSWDTSVRLYDVPANSMRLKYQHTGAVLDCAFYDPTH AWSGGLDHQLKMHDNLNTDQENLVGTHDAPIRCVEYCPEVNVMTGSDQTVKLVDPRTPCNAGTFSQPE KYVYTLVSGDRLIVGTAGRRVLVWDLRNMGYVQQRRESSLKYQTRCIRAFPNKQGYVLSIEGRVAVEY LDPSPEVQKKKYAFKCHRLKENNIEQIYPVNAISFHNIHNTFATGGSDGFVNIWDPFNKKRLCQFHRYP TSIASLAFSNDGTTLAIASSYMYEMDDTEHPEDGIFIRQVTD AETKPKST TRTRPLEQKLI SEEDLAANDILDYKDDDDKV</p>
Tag:	Recombinant protein using RC220961 also available, TP320961 C-Myc/DDK
Purity:	> 80% as determined by SDS-PAGE and Coomassie blue staining
Concentration:	>0.05 µg/µL as determined by microplate BCA method
Labeling Method:	Labeled with [U- ¹³ C ₆ , ¹⁵ N ₄]-L-Arginine and [U- ¹³ C ₆ , ¹⁵ N ₂]-L-Lysine
Buffer:	25 mM Tris-HCl, 100 mM glycine, pH 7.3
Storage:	Store at -80°C. Avoid repeated freeze-thaw cycles.
Stability:	Stable for 3 months from receipt of products under proper storage and handling conditions.
RefSeq:	NP_001007794
RefSeq Size:	1374
RefSeq ORF:	978
Synonyms:	BUB3L; hBUB3
Locus ID:	9184



[View online »](#)

UniProt ID: [O43684](#), [A0A140VJF3](#)

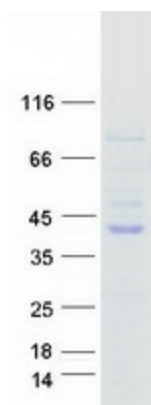
Cytogenetics: 10q26.13

Summary: This gene encodes a protein involved in spindle checkpoint function. The encoded protein contains four WD repeat domains and has sequence similarity with the yeast BUB3 protein. Alternate transcriptional splice variants, encoding different isoforms, have been characterized. [provided by RefSeq, Jul 2008]

Protein Families: Druggable Genome

Protein Pathways: Cell cycle

Product images:



Coomassie blue staining of purified BUB3 protein (Cat# [TP320961]). The protein was produced from HEK293T cells transfected with BUB3 cDNA clone (Cat# [RC220961]) using MegaTran 2.0 (Cat# [TT210002]).