

## Product datasheet for PH320945

### Kallikrein 9 (KLK9) (NM\_012315) Human Mass Spec Standard

#### Product data:

Product Type:	Mass Spec Standards
Description:	KLK9 MS Standard C13 and N15-labeled recombinant protein (NP_036447)
Species:	Human
Expression Host:	HEK293
Expression cDNA Clone or AA Sequence:	RC220945
Predicted MW:	27.3 kDa
Protein Sequence:	>RC220945 representing NM_012315 <b>Red</b> =Cloning site <b>Green</b> =Tags(s)  MKLGLLCALLSLLAGHWADTRAI GAEECRPN SQPWQAGLFHLTRLFCGATLISDRWLLTA AHC RKP YLW VRLGEHHLWKWEGPEQLFRVTDFFPHPGFNKDL SANDHNDIMLIRLPRQARLSPAVQPLNLSQTCVSPG MQCLISGWGAVSSPKALFPVTLQCANISILENKLCHWAYPGHISDSMLCAGLWEGGRGSCQGDSSGGLVC NGTLAGVVS GGAEP CSRPRRPAVYTSVCHYLDWIQEIMEN  <b>TRTRPLEQKLI SEEDLAANDILDYKDDDDKV</b>
Tag:	C-Myc/DDK
Purity:	> 80% as determined by SDS-PAGE and Coomassie blue staining
Concentration:	>0.05 µg/µL as determined by microplate BCA method
Labeling Method:	Labeled with [U- <sup>13</sup> C <sub>6</sub> , <sup>15</sup> N <sub>4</sub> ]-L-Arginine and [U- <sup>13</sup> C <sub>6</sub> , <sup>15</sup> N <sub>2</sub> ]-L-Lysine
Buffer:	25 mM Tris-HCl, 100 mM glycine, pH 7.3
Storage:	Store at -80°C. Avoid repeated freeze-thaw cycles.
Stability:	Stable for 3 months from receipt of products under proper storage and handling conditions.
RefSeq:	<a href="#">NP_036447</a>
RefSeq Size:	1438
RefSeq ORF:	750
Synonyms:	KLK-L3; KLKL3
Locus ID:	284366
UniProt ID:	<a href="#">Q9UKQ9</a> , <a href="#">Q2XQG6</a>



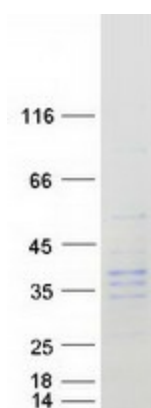
[View online »](#)

**Cytogenetics:** 19q13.41

**Summary:** The protein encoded by this gene is a kallikrein-related serine protease. This gene is activated by steroid hormones in a human breast cancer cell line, making it a good marker for cancer detection. The encoded protein is found primarily in the cytoplasm.[provided by RefSeq, Oct 2010]

**Protein Families:** Druggable Genome, Protease, Secreted Protein

### Product images:



Coomassie blue staining of purified KLK9 protein (Cat# [TP320945]). The protein was produced from HEK293T cells transfected with KLK9 cDNA clone (Cat# [RC220945]) using MegaTran 2.0 (Cat# [TT210002]).