

Product datasheet for PH320942

CT45A2 (NM_152582) Human Mass Spec Standard

Product data:

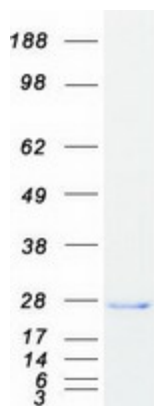
Product Type:	Mass Spec Standards
Description:	CT45A2 MS Standard C13 and N15-labeled recombinant protein (NP_689795)
Species:	Human
Expression Host:	HEK293
Expression cDNA Clone or AA Sequence:	RC220942
Predicted MW:	21.1 kDa
Protein Sequence:	<p>>RC220942 representing NM_152582</p> <p>Red=Cloning site Green=Tags(s)</p> <p>MTDKTEKVAVDPEPTVFKRPRECDSPSYQKRQRMALLARKQGAGDSLIAGSAMSKEKKLMTGHAIPPSQLD SQIDDFTGFSKDRMMQKPGSNAPVGGNVTSSFSGDDLECRETASSPKSQREINADIKRKLVKELRCVGQK YEKIFEMLEGVQGPTAVRKRFESIIKEAARCRRDFVKHLKKLKRMI</p> <p>TRTRPLEQKLISEEDLAANDILDYKDDDDKV</p>
Tag:	C-Myc/DDK
Purity:	> 80% as determined by SDS-PAGE and Coomassie blue staining
Concentration:	>0.05 µg/µL as determined by microplate BCA method
Labeling Method:	Labeled with [U- ¹³ C ₆ , ¹⁵ N ₄]-L-Arginine and [U- ¹³ C ₆ , ¹⁵ N ₂]-L-Lysine
Buffer:	25 mM Tris-HCl, 100 mM glycine, pH 7.3
Storage:	Store at -80°C. Avoid repeated freeze-thaw cycles.
Stability:	Stable for 3 months from receipt of products under proper storage and handling conditions.
RefSeq:	NP_689795
RefSeq Size:	1032
RefSeq ORF:	567
Synonyms:	CT45-2; CT45.2; CT45A8; CT45A9
Locus ID:	728911
UniProt ID:	Q5DJT8 , P0DMV1 , P0DMV2


[View online »](#)

Cytogenetics: Xq26.3

Summary: This gene represents one of a cluster of several similar genes located on the q arm of chromosome X. The genes in this cluster encode members of the cancer/testis (CT) family of antigens, and are distinct from other CT antigens. These antigens are thought to be novel therapeutic targets for human cancers. [provided by RefSeq, Apr 2014]

Product images:



Coomassie blue staining of purified CT45A2 protein (Cat# [TP320942]). The protein was produced from HEK293T cells transfected with CT45A2 cDNA clone (Cat# [RC220942]) using MegaTran 2.0 (Cat# [TT210002]).