

Product datasheet for PH320941

ADAM11 (NM_002390) Human Mass Spec Standard

Product data:

Product Type:	Mass Spec Standards
Description:	ADAM11 MS Standard C13 and N15-labeled recombinant protein (NP_002381)
Species:	Human
Expression Host:	HEK293
Expression cDNA Clone or AA Sequence:	RC220941
Predicted MW:	83.2 kDa
Protein Sequence:	>RC220941 representing NM_002390 Red=Cloning site Green=Tags(s)

MRLLRWFAALLLSLLPTPGLGTQGPAGALRWGGLPQLGGPGAPEVTEPSRLVRESSGGEVRKQQLDTR
VRQEPGGPPVHLAQVSFVIPAFNSNFTLDLELNHLLSSQYVERHFSREGTTQHSTGAGDHCYQGLR
GNPHSFAALSTCQGLHGVSFSDGNLTYIVPEQEVAGPWGAPQGPLPHLIYRTPLLPDPLGCREPGCLFAVP
AQSAAPPNRRLRRKRQVRRGHPTVHSETKYVELIVINDHQLFEQMRQSVVLTSNFAKSVVNLADVIYKEQ
LNTRIVLVAMETWADGDKIQVQDDLLETARLMVYRREGLPEPSDATHLFSGRTFQSTSSGAAAYVGGICS
LSHGGGVNEYGNMGAMAVTLAQTGQNLGMMWNKHRSSAGDCKCPDIWLGCMEDTGFYLPKFSRCSID
EYNQFLQEGGGSCLFNKPLKLLDPPECNGFVEAGEECDGCVQECRAGNCCKKCTLTHDAMCSGLC
CRRCKYEPRGVSCREAVNECDIAETCTGDSSQCPPNLHKLDGYYCDHEQGRCYGGRCKTRDRQCQVLWGH
AAADRFCEYKLNVEGTERGSCGRKGSWVQCQSKQDVLGCFLLCVNISGAPRLGDLVGDISSVTFYHQGKE
LDCRGGHVQLADGSDLSYVEDGTACGPNMLCLDHRCLPASAFNFSTCPGSGERRICSHHGVCNEGKCIC
QPDWTGKDCSIHNPLTSPPTGETERYKGPSGTNIIIGSIAGAVLVAAIIVLGGTGWGFKNIRRGSSGA

TRTRPLEQKLISEEDLAANDILDYKDDDDKV

Tag:	C-Myc/DDK
Purity:	> 80% as determined by SDS-PAGE and Coomassie blue staining
Concentration:	>0.05 µg/µL as determined by microplate BCA method
Labeling Method:	Labeled with [U- 13C6, 15N4]-L-Arginine and [U- 13C6, 15N2]-L-Lysine
Buffer:	25 mM Tris-HCl, 100 mM glycine, pH 7.3
Storage:	Store at -80°C. Avoid repeated freeze-thaw cycles.
Stability:	Stable for 3 months from receipt of products under proper storage and handling conditions.
RefSeq:	<u>NP_002381</u>



[View online »](#)

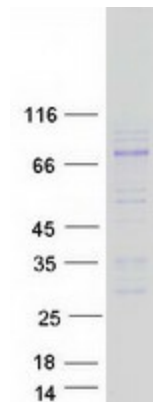
RefSeq Size:	4402
RefSeq ORF:	2307
Synonyms:	MDC
Locus ID:	4185
UniProt ID:	O75078
Cytogenetics:	17q21.31

Summary:

This gene encodes a member of the ADAM (a disintegrin and metalloprotease) protein family. Members of this family are membrane-anchored proteins structurally related to snake venom disintegrins, and have been implicated in a variety of biological processes involving cell-cell and cell-matrix interactions, including fertilization, muscle development, and neurogenesis. The encoded preproprotein is proteolytically processed to generate the mature protease. This gene represents a candidate tumor suppressor gene for human breast cancer based on its location within a minimal region of chromosome 17q21 previously defined by tumor deletion mapping. Alternative splicing results in multiple transcript variants, at least one of which encodes an isoform that is proteolytically processed. [provided by RefSeq, Jan 2016]

Protein Families:

Druggable Genome, Transmembrane

Product images:

Coomassie blue staining of purified ADAM11 protein (Cat# [TP320941]). The protein was produced from HEK293T cells transfected with ADAM11 cDNA clone (Cat# [RC220941]) using MegaTran 2.0 (Cat# [TT210002]).