

Product datasheet for PH320905

Lipophilin B (SCGB1D2) (NM_006551) Human Mass Spec Standard

Product data:

Product Type:	Mass Spec Standards
Description:	SCGB1D2 MS Standard C13 and N15-labeled recombinant protein (NP_006542)
Species:	Human
Expression Host:	HEK293
Expression cDNA Clone or AA Sequence:	RC220905
Predicted MW:	9.9 kDa
Protein Sequence:	>RC220905 protein sequence Red=Cloning site Green=Tags(s) MKLSVCLLLVTLALCCYQANAFCPALVSELLDFFFISEPLFKLSLAKFDAPPEAVAACLGVKRCRDQMS LQKRSLIAEVLVKILKKCSV TRTRPLEQKLISEEDLAANDILDYKDDDDKV
Tag:	C-Myc/DDK
Purity:	> 80% as determined by SDS-PAGE and Coomassie blue staining
Concentration:	>0.05 µg/µL as determined by microplate BCA method
Labeling Method:	Labeled with [U- 13C6, 15N4]-L-Arginine and [U- 13C6, 15N2]-L-Lysine
Buffer:	25 mM Tris-HCl, 100 mM glycine, pH 7.3
Storage:	Store at -80°C. Avoid repeated freeze-thaw cycles.
Stability:	Stable for 3 months from receipt of products under proper storage and handling conditions.
RefSeq:	NP_006542
RefSeq Size:	454
RefSeq ORF:	270
Synonyms:	LIPB; LPHB; LPNB
Locus ID:	10647
UniProt ID:	O95969
Cytogenetics:	11q12.3



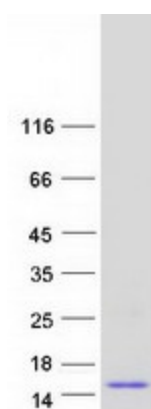
[View online »](#)

Summary:

The protein encoded by this gene is a member of the lipophilin subfamily, part of the uteroglobin superfamily, and is an ortholog of prostatein, the major secretory glycoprotein of the rat ventral prostate gland. Lipophilin gene products are widely expressed in normal tissues, especially in endocrine-responsive organs. Assuming that human lipophilins are the functional counterparts of prostatein, they may be transcriptionally regulated by steroid hormones, with the ability to bind androgens, other steroids and possibly bind and concentrate estramustine, a chemotherapeutic agent widely used for prostate cancer. Although the gene has been reported to be on chromosome 10, this sequence appears to be from a cluster of genes on chromosome 11 that includes mammaglobin 2. [provided by RefSeq, Jul 2008]

Protein Families:

Secreted Protein

Product images:

Coomassie blue staining of purified SCGB1D2 protein (Cat# [TP320905]). The protein was produced from HEK293T cells transfected with SCGB1D2 cDNA clone (Cat# [RC220905]) using MegaTran 2.0 (Cat# [TT210002]).