

Product datasheet for PH320903

ApoER2 (LRP8) (NM_017522) Human Mass Spec Standard

Product data:

Product Type:	Mass Spec Standards
Description:	LRP8 MS Standard C13 and N15-labeled recombinant protein (NP_059992)
Species:	Human
Expression Host:	HEK293
Expression cDNA Clone or AA Sequence:	RC220903
Predicted MW:	78.3 kDa
Protein Sequence:	>RC220903 representing NM_017522 Red=Cloning site Green=Tags(s)

MGLPEPGPLRLLALLLLLLLLLLLQLQHLAAAAADPLLGGQGPADKCEKQDFQCRNERCIPSVWRCEDD
DCLDHSDEDDCPKKTCA DSDFTCDNGHCIHERWKCDGEEECPDGSESEATCTKQVCPAEKLS CGPTSHK
CVPASWRCDGEKDC EGGADEAGCATSLGT CRGDEFQCGDGT CVLAIKHCNQE QDCPDGSDEAGLQGLNE
CLHNNGGCSHICTDLKIGFECTCPAGFQLLDQKTCGDIDECKDPDACSQICVNYKGYFKCECYPGYEMDL
LTKNCKAAAGKSPSLIFTNRHEVRRIDL VKNYSRLIPMLKNVVALDVEVATNRIYWCDSL SYRKIYSAYM
DKASDPKEQEV LIDEQLHSPEGLAVDWWHKHIYWTDSGNKTI SVATVDGRRRTLFSRNLSEPR IAVDP
LRGFMYWSDWGDQAKIEK SGLNGVDRQTLVSDNIEWPNGITL DLLSQRL YWVDSKLHQLSSIDFSGGNRK
TLISSTDFLSHPFGIAVFEDKVFWDLENEAIFSANRLNGLEISILAENLNNPHDIVIFHELKQPRAPDA
CELSVQPNGGCEYLCLPAPQISSHSPKYTCACPD TMWLGPMKRCYRDANEDSKMGSTV TAAVIGIIVPI
VVIALLCM SGYLIWRNWKRNKTKSMNFDPVYRKTTEEEDEDELHIGRTAQIGHVYPARVALSLEDDGLP

TRTRPLEQKLI SEEDLAANDILDYKDDDDKV

Tag:	C-Myc/DDK
Purity:	> 80% as determined by SDS-PAGE and Coomassie blue staining
Concentration:	>0.05 µg/µL as determined by microplate BCA method
Labeling Method:	Labeled with [U- 13C6, 15N4]-L-Arginine and [U- 13C6, 15N2]-L-Lysine
Buffer:	25 mM Tris-HCl, 100 mM glycine, pH 7.3
Storage:	Store at -80°C. Avoid repeated freeze-thaw cycles.
Stability:	Stable for 3 months from receipt of products under proper storage and handling conditions.
RefSeq:	NP_059992
RefSeq Size:	6994



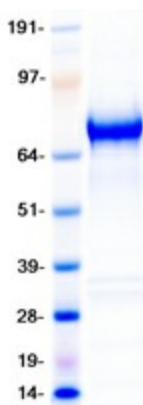
[View online »](#)

RefSeq ORF:	2100
Synonyms:	APOER2; HSZ75190; LRP-8; MCI1
Locus ID:	7804
UniProt ID:	Q14114
Cytogenetics:	1p32.3

Summary: This gene encodes a member of the low density lipoprotein receptor (LDLR) family. Low density lipoprotein receptors are cell surface proteins that play roles in both signal transduction and receptor-mediated endocytosis of specific ligands for lysosomal degradation. The encoded protein plays a critical role in the migration of neurons during development by mediating Reelin signaling, and also functions as a receptor for the cholesterol transport protein apolipoprotein E. Expression of this gene may be a marker for major depressive disorder. Alternatively spliced transcript variants encoding multiple isoforms have been observed for this gene. [provided by RefSeq, Jun 2011]

Protein Families: Druggable Genome, Secreted Protein, Transmembrane

Product images:



Coomassie blue staining of purified LRP8 protein (Cat# [TP320903]). The protein was produced from HEK293T cells transfected with LRP8 cDNA clone (Cat# [RC220903]) using MegaTran 2.0 (Cat# [TT210002]).