

Product datasheet for PH320884

Esa1 (FLOT2) (NM_004475) Human Mass Spec Standard

Product data:

Product Type:	Mass Spec Standards
Description:	FLOT2 MS Standard C13 and N15-labeled recombinant protein (NP_004466)
Species:	Human
Expression Host:	HEK293
Expression cDNA Clone or AA Sequence:	RC220884
Predicted MW:	46.9 kDa
Protein Sequence:	>RC220884 representing NM_004475 Red=Cloning site Green=Tags(s) MGNCHTVGPNEALVVSGCCGSDYKQYVFGGWAWAWWCISDTQRISLEIMTLQPRCEDVETAEQVALTVT GVAQVKIMTEKELLAVACEQFLGKNVQDIKNVVLQTLGHLRSILGTLTVEQIYQDRDQFAKLVREVAAP DVGRMGIEILSFTIKDVYDKVDYLSSLGKTQTAVVQRDADIGVAEAERDAGIREAECKKEMLDVKFMADT KIADSKRAFELQKSAFSEEVNIKTAEAQLAYELQGAREQQKIRQEEIEIEVVQRKKQIAVEAQEILRTDK ELIATVRRPAEAEAHRIQQIAEGEKVKQVLLAQAEAEKIRKIGEAEEAVIEAMGKAEARMKLAEAYQK YGDAAKMALVLEALPQIAAKIAAPLTKVDEIVVLSGDNSKVTSEVNRLLAELPASVHALTGVDSLKIPLI KKATGVQV TRTRPLEQKLISEEDLAANDILDYKDDDDKV
Tag:	C-Myc/DDK
Purity:	> 80% as determined by SDS-PAGE and Coomassie blue staining
Concentration:	>0.05 µg/µL as determined by microplate BCA method
Labeling Method:	Labeled with [U- ¹³ C ₆ , ¹⁵ N ₄]-L-Arginine and [U- ¹³ C ₆ , ¹⁵ N ₂]-L-Lysine
Buffer:	25 mM Tris-HCl, 100 mM glycine, pH 7.3
Storage:	Store at -80°C. Avoid repeated freeze-thaw cycles.
Stability:	Stable for 3 months from receipt of products under proper storage and handling conditions.
RefSeq:	<u>NP_004466</u>
RefSeq Size:	2659
RefSeq ORF:	1284
Synonyms:	ECS-1; ECS1; ESA; ESA1; M17S1



[View online »](#)

Locus ID: 2319

UniProt ID: [Q14254](#), [A0A024QZ62](#), [Q9BTI6](#)

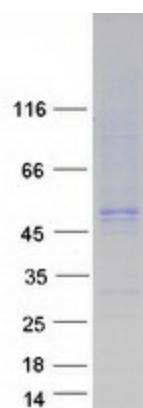
Cytogenetics: 17q11.2

Summary: Caveolae are small domains on the inner cell membrane involved in vesicular trafficking and signal transduction. This gene encodes a caveolae-associated, integral membrane protein, which is thought to function in neuronal signaling. [provided by RefSeq, Jul 2008]

Protein Families: Druggable Genome

Protein Pathways: Insulin signaling pathway

Product images:



Coomassie blue staining of purified FLOT2 protein (Cat# [TP320884]). The protein was produced from HEK293T cells transfected with FLOT2 cDNA clone (Cat# [RC220884]) using MegaTran 2.0 (Cat# [TT210002]).