

Product datasheet for PH320858

CHI3L2 (NM_001025197) Human Mass Spec Standard

Product data:

| | |
|---------------------------------------|---|
| Product Type: | Mass Spec Standards |
| Description: | CHI3L2 MS Standard C13 and N15-labeled recombinant protein (NP_001020368) |
| Species: | Human |
| Expression Host: | HEK293 |
| Expression cDNA Clone or AA Sequence: | RC220858 |
| Predicted MW: | 42.3 kDa |
| Protein Sequence: | >RC220858 representing NM_001025197 Red=Cloning site Green=Tags(s) |

MGATTMDQKSLWAGSAYKLVCFYTNWSQDRQEPGKFTPENIDPFLCSHLIYSFASIENNKVVIKDKSEVM
LYQTINSLKTKNPKLKILLSIGGYLFGSKGFHPMVSSTSRLEFINSIILFLRNHNF DGLDVSWIYPDQK
ENTHFTVLIHELAEAFQKDFTKSTKERLLLTVGVSAGRQ MIDNSYQVEKLA KDLDFINLLSFDHGSWEK
PLITGHNSPLSKGWQDRGPSSYYNVEYAVGYWIHKMPSEKVVMIPTYGHSFTLASAETTVGAPASGPG
AAGPITESSGFLAYYEICQFLKGAKITRLQDQQVPYAVKGNQWVG YDDVKSMETKVQFLKNLNLGGAMIW
SIDMDDFTGKSCNQGPYPLVQAVKRSLSL

TRTRPLEQKLISEEDLAANDILDYKDDDDKV

| | |
|------------------|--|
| Tag: | C-Myc/DDK |
| Purity: | > 80% as determined by SDS-PAGE and Coomassie blue staining |
| Concentration: | >0.05 µg/µL as determined by microplate BCA method |
| Labeling Method: | Labeled with [U- ¹³ C ₆ , ¹⁵ N ₄]-L-Arginine and [U- ¹³ C ₆ , ¹⁵ N ₂]-L-Lysine |
| Buffer: | 25 mM Tris-HCl, 100 mM glycine, pH 7.3 |
| Storage: | Store at -80°C. Avoid repeated freeze-thaw cycles. |
| Stability: | Stable for 3 months from receipt of products under proper storage and handling conditions. |
| RefSeq: | <u>NP_001020368</u> |
| RefSeq Size: | 1456 |
| RefSeq ORF: | 1140 |
| Synonyms: | CHIL2; YKL-39; YKL39 |
| Locus ID: | 1117 |



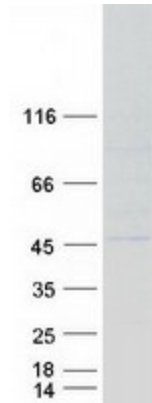
[View online »](#)

UniProt ID: [Q15782](#)

Cytogenetics: 1p13.2

Summary: The protein encoded by this gene is similar to bacterial chitinases but lacks chitinase activity. The encoded protein is secreted and is involved in cartilage biogenesis. Several transcript variants encoding different isoforms have been found for this gene. [provided by RefSeq, Apr 2012]

Product images:



Coomassie blue staining of purified CHI3L2 protein (Cat# [TP320858]). The protein was produced from HEK293T cells transfected with CHI3L2 cDNA clone (Cat# [RC220858]) using MegaTran 2.0 (Cat# [TT210002]).