

Product datasheet for PH320854

VAMP1 (NM_014231) Human Mass Spec Standard

Product data:

Product Type:	Mass Spec Standards
Description:	VAMP1 MS Standard C13 and N15-labeled recombinant protein (NP_055046)
Species:	Human
Expression Host:	HEK293
Expression cDNA Clone or AA Sequence:	RC220854
Predicted MW:	12.7 kDa
Protein Sequence:	>RC220854 representing NM_014231 Red =Cloning site Green =Tags(s) MSAPAQPPAEGTEGTAPGGGPPGPPNMTSNRRLQQTQAQVEEVVDIIRVNVDKVLERDQKLSLDDRAD ALQAGASQFESSAAKLKRKYWWKNCKMMIMLGAICAIIVVVIVIFYFT TRTRPLEQKLISEEDLAANDILDYKDDDDKV
Tag:	C-Myc/DDK
Purity:	> 80% as determined by SDS-PAGE and Coomassie blue staining
Concentration:	>0.05 µg/µL as determined by microplate BCA method
Labeling Method:	Labeled with [U- 13C6, 15N4]-L-Arginine and [U- 13C6, 15N2]-L-Lysine
Buffer:	25 mM Tris-HCl, 100 mM glycine, pH 7.3
Storage:	Store at -80°C. Avoid repeated freeze-thaw cycles.
Stability:	Stable for 3 months from receipt of products under proper storage and handling conditions.
RefSeq:	NP_055046
RefSeq Size:	2748
RefSeq ORF:	354
Synonyms:	CMS25; SPAX1; SYB1; VAMP-1
Locus ID:	6843
UniProt ID:	P23763
Cytogenetics:	12p13.31



[View online »](#)

Summary:

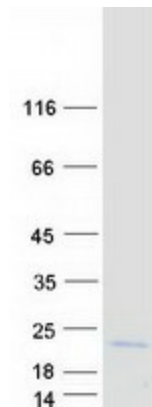
Synaptobrevins, syntaxins, and the synaptosomal-associated protein SNAP25 are the main components of a protein complex involved in the docking and/or fusion of synaptic vesicles with the presynaptic membrane. The protein encoded by this gene is a member of the vesicle-associated membrane protein (VAMP)/synaptobrevin family. Mutations in this gene are associated with autosomal dominant spastic ataxia 1. Multiple alternative splice variants have been described, but the full-length nature of some variants has not been defined. [provided by RefSeq, Jul 2014]

Protein Families:

Secreted Protein, Transmembrane

Protein Pathways:

SNARE interactions in vesicular transport

Product images:

Coomassie blue staining of purified VAMP1 protein (Cat# [TP320854]). The protein was produced from HEK293T cells transfected with VAMP1 cDNA clone (Cat# [RC220854]) using MegaTran 2.0 (Cat# [TT210002]).