

Product datasheet for PH320847

SOCS1 (NM_003745) Human Mass Spec Standard

Product data:

Product Type:	Mass Spec Standards
Description:	SOCS1 MS Standard C13 and N15-labeled recombinant protein (NP_003736)
Species:	Human
Expression Host:	HEK293
Expression cDNA Clone or AA Sequence:	RC220847
Predicted MW:	23.4 kDa
Protein Sequence:	>RC220847 representing NM_003745 Red=Cloning site Green=Tags(s) MVAHNQVAADNAVSTAAEPRRRPEPSSSSSSPAAPARPRPCPAVPAPAPGDTHFRTRFRSHADYRRITRA SALLDACGFYWGPLSVHGAHERLRAEPVGTFLVRDSRQRNCFALSVKMASGPTSIRVHFQAGRFLDGS RESFDCLFELLEHYVAAPRRMLGAPLRQRRVRPLQELCRQRIVATVGRENLARIPLNPVLRDYLSSFPFQ I TRTRPLEQKLI SEEDLAANDILDYKDDDDKV
Tag:	C-Myc/DDK
Purity:	> 80% as determined by SDS-PAGE and Coomassie blue staining
Concentration:	>0.05 µg/µL as determined by microplate BCA method
Labeling Method:	Labeled with [U- ¹³ C ₆ , ¹⁵ N ₄]-L-Arginine and [U- ¹³ C ₆ , ¹⁵ N ₂]-L-Lysine
Buffer:	25 mM Tris-HCl, 100 mM glycine, pH 7.3
Storage:	Store at -80°C. Avoid repeated freeze-thaw cycles.
Stability:	Stable for 3 months from receipt of products under proper storage and handling conditions.
RefSeq:	NP_003736
RefSeq Size:	1216
RefSeq ORF:	633
Synonyms:	AISIMD; CIS1; CISH1; JAB; SOCS-1; SSI-1; SSI1; TIP-3; TIP3
Locus ID:	8651
UniProt ID:	O15524 , Q4IHT5



[View online »](#)

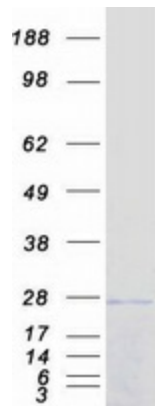
Cytogenetics: 16p13.13

Summary: This gene encodes a member of the STAT-induced STAT inhibitor (SSI), also known as suppressor of cytokine signaling (SOCS), family. SSI family members are cytokine-inducible negative regulators of cytokine signaling. The expression of this gene can be induced by a subset of cytokines, including IL2, IL3 erythropoietin (EPO), CSF2/GM-CSF, and interferon (IFN)-gamma. The protein encoded by this gene functions downstream of cytokine receptors, and takes part in a negative feedback loop to attenuate cytokine signaling. Knockout studies in mice suggested the role of this gene as a modulator of IFN-gamma action, which is required for normal postnatal growth and survival. [provided by RefSeq, Jul 2008]

Protein Families: Druggable Genome, Stem cell - Pluripotency, Stem cell relevant signaling - JAK/STAT signaling pathway

Protein Pathways: Insulin signaling pathway, Jak-STAT signaling pathway, Type II diabetes mellitus, Ubiquitin mediated proteolysis

Product images:



Coomassie blue staining of purified SOCS1 protein (Cat# [TP320847]). The protein was produced from HEK293T cells transfected with SOCS1 cDNA clone (Cat# [RC220847]) using MegaTran 2.0 (Cat# [TT210002]).